

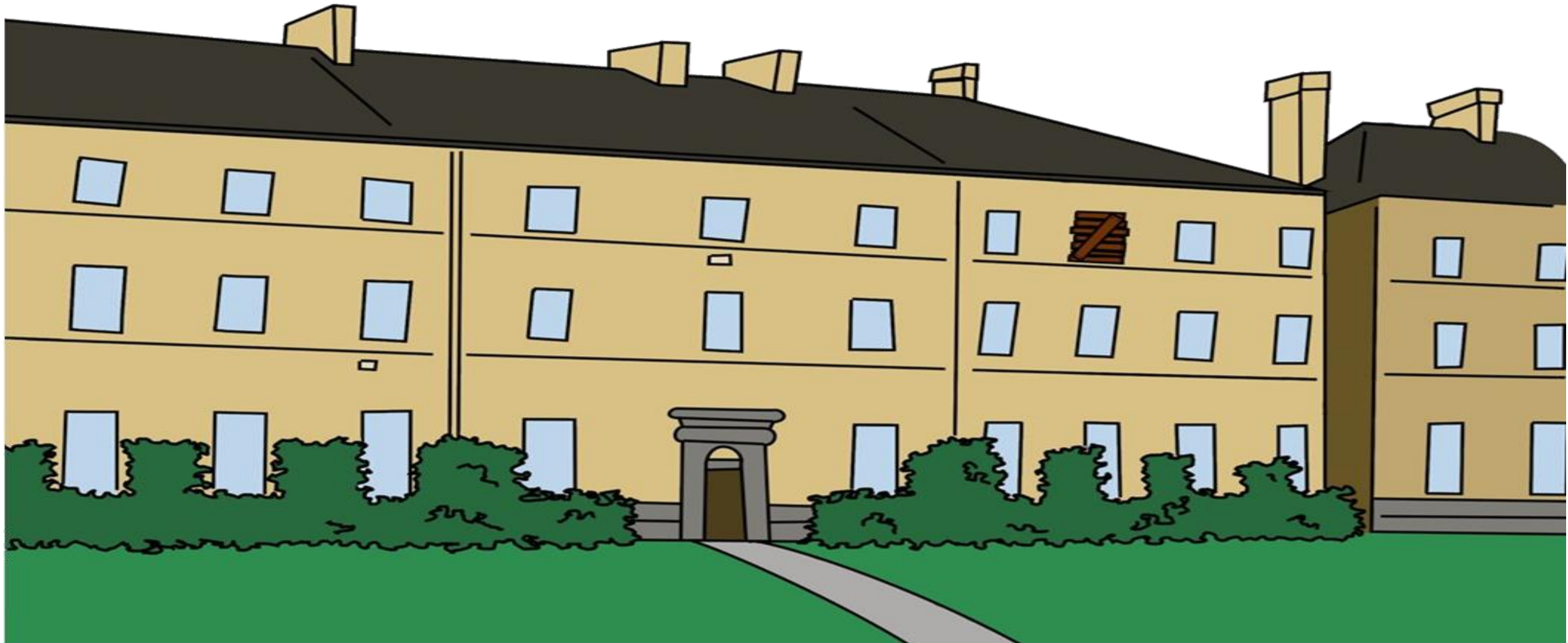
# Baker Street Elementary

PRESENTS  
"THE LIFE AND TIMES IN VICTORIAN LONDON"



# Baker Street Elementary

THE LIFE AND TIMES IN VICTORIAN LONDON  
# A019 -- YOUR FRONTAL DEVELOPMENT IS SHOWING -- JANUARY, 2022



**WELCOME TO TOPIC # 019... TODAY WE WILL BE  
LOOKING AT PHRENOLOGY, THE STUDY OF THE SHAPE  
AND SIZE OF THE CRANIUM AS A SUPPOSED  
INDICATION OF CHARACTER AND MENTAL ABILITIES.**

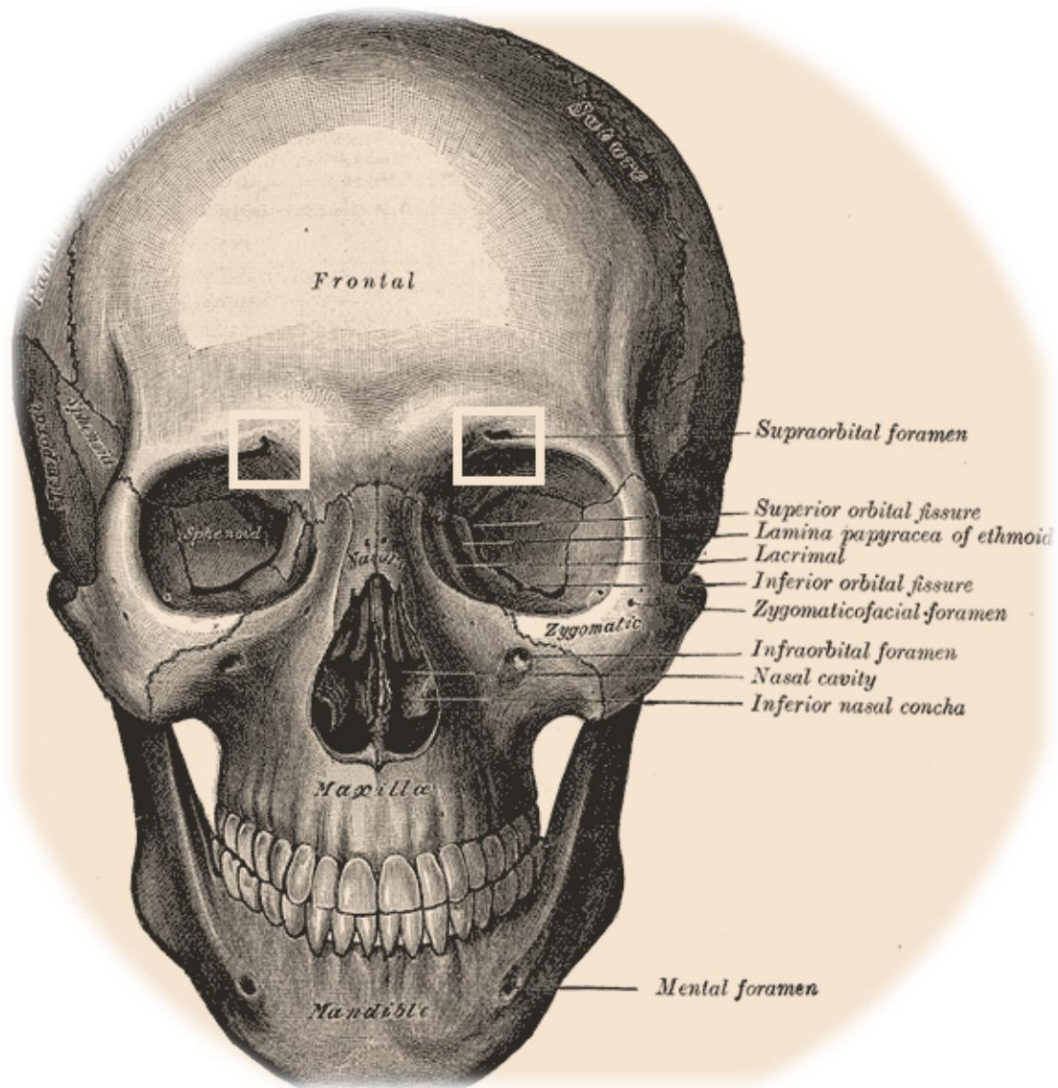


*IN THE SHERLOCK HOLMES STORIES, TWO VERY DIFFERENT CHARACTERS COMMENTED ON YOUR SKULL AND PROVIDED QUITE DIVERSE INTERPRETATIONS OF ITS SHAPE.*



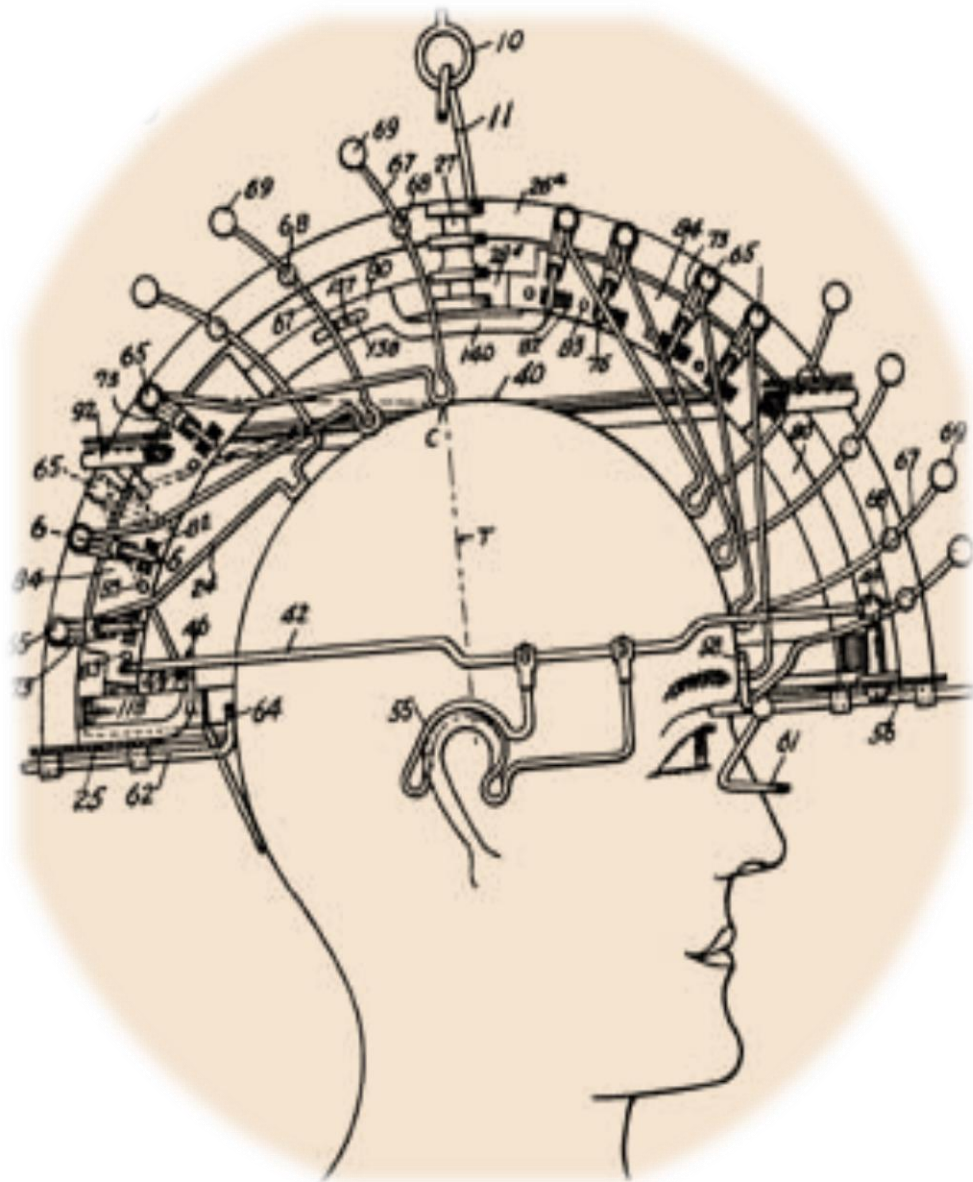
IN THE HOUND OF THE BASKERVILLES, DR. MORTIMER DESCRIBED YOUR SKULL AS 'DOLICHOCEPHALIC' WITH 'WELL-MARKED SUPRA-ORBITAL DEVELOPMENT'... ON THE OTHER HAND, DR. MORIARTY IN 'THE FINAL PROBLEM' FOUND YOUR FRONTAL DEVELOPMENT 'LACKING.'





**THE SUPRA-ORBITAL DEVELOPMENT IS THE REGION IMMEDIATELY ABOVE THE EYE SOCKETS, WHERE THE EYEBROWS ARE LOCATED.**





**BOTH MEN REFERRED TO THE INDICATION OF INTELLECTUAL CAPACITY OFFERED BY THE PSEUDO-SCIENCE OF PHRENOLOGY.**



WHILE THE VARIATION IN YOUR APTITUDE MIGHT BE EXPLAINED BY THE PERSON MAKING THE OBSERVATION, THE SCIENTIFIC TENETS OF PHRENOLOGY SUGGEST ANOTHER POSSIBILITY AS WELL.

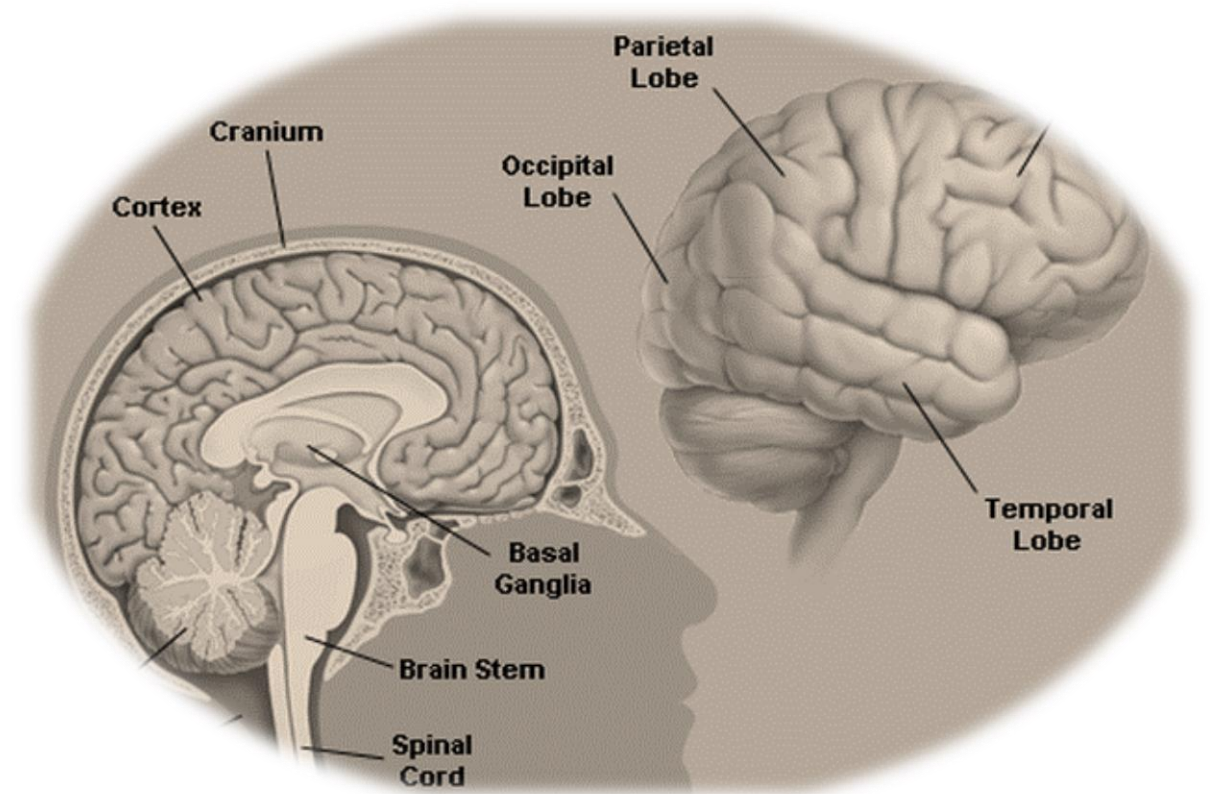




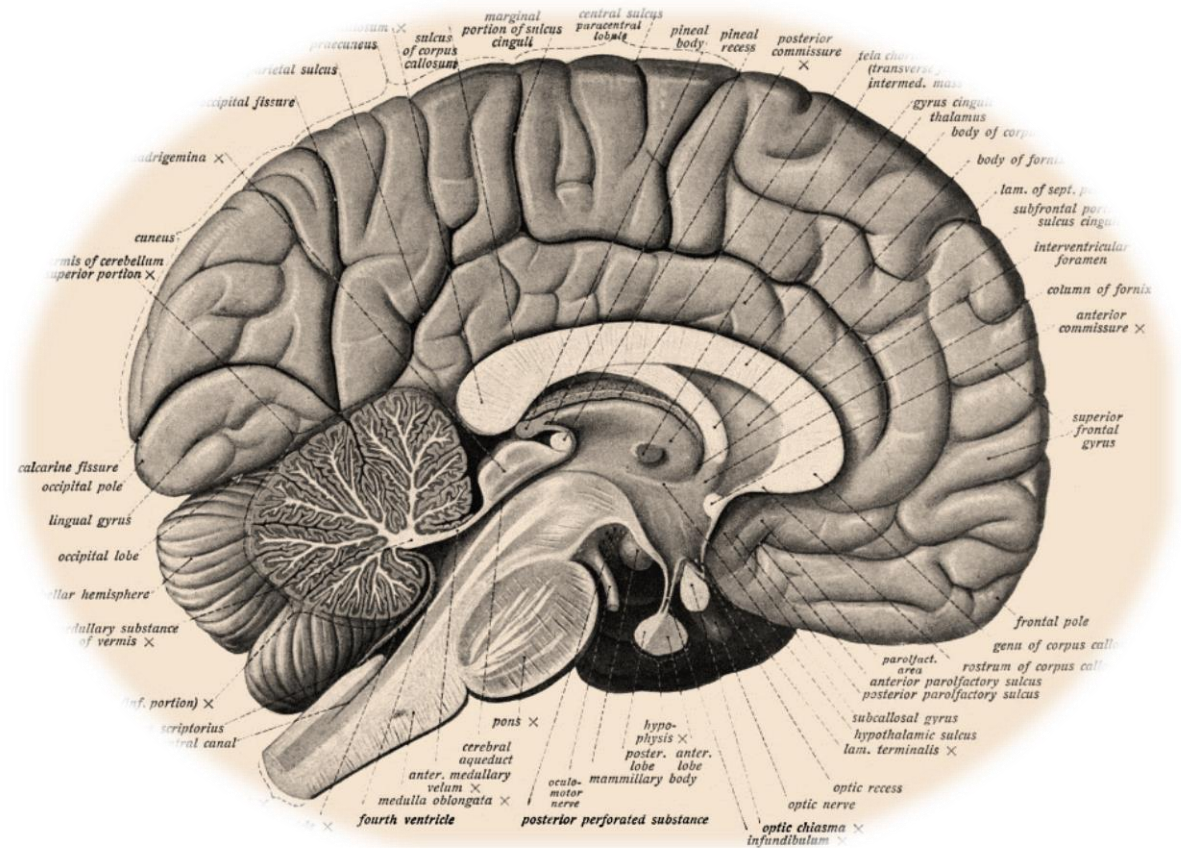
**FRANZ JOSEPH GALL, THE FOUNDER OF  
PHRENOLOGY, DESCRIBED SIX BASIC PRINCIPLES OF  
HIS WORK:**



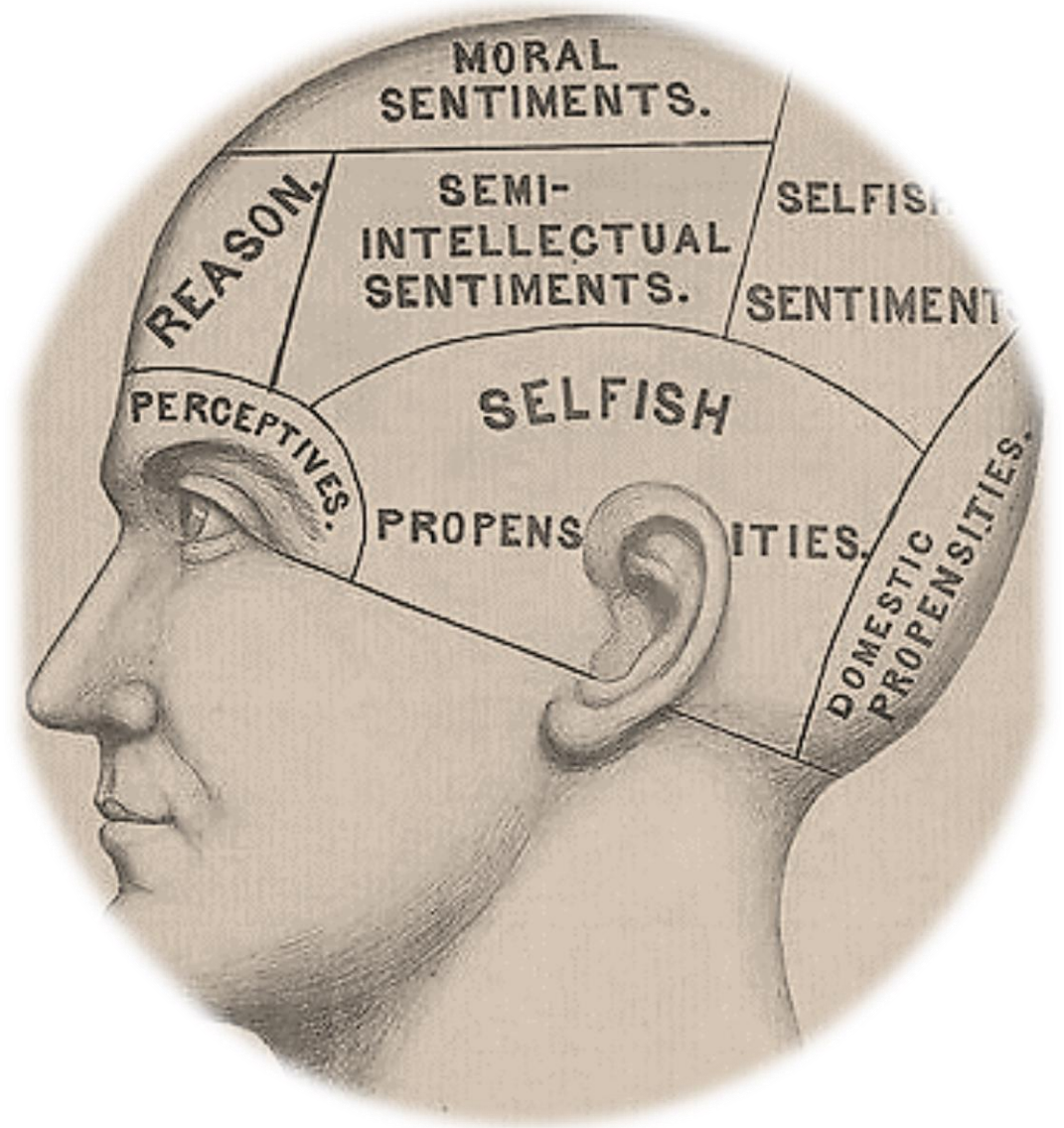
FIRST, THE BRAIN IS THE ORGAN OF THE MIND;  
SECOND, THE MIND IS COMPOSED OF MULTIPLE,  
DISTINCT, INNATE FACULTIES...



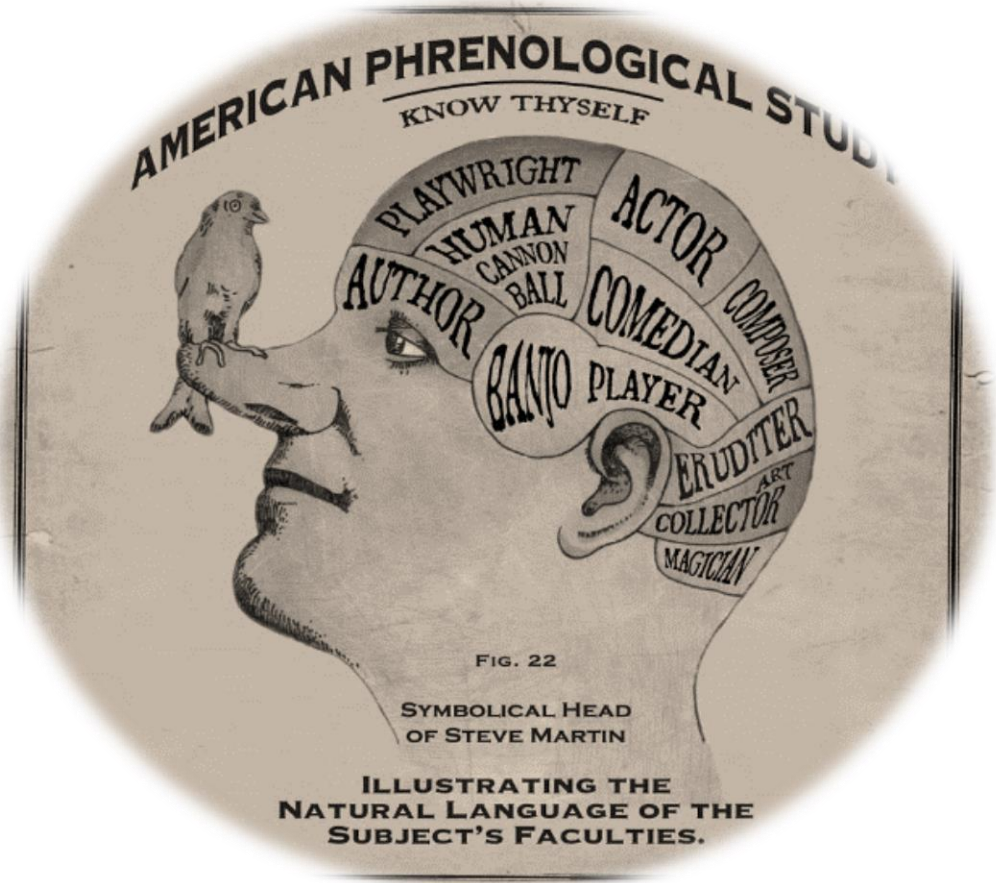
... THIRD, BECAUSE THEY ARE DISTINCT, EACH FACULTY MUST HAVE A SEPARATE SEAT OR 'ORGAN' IN THE BRAIN; FOURTH, THE SIZE OF AN ORGAN, OTHER THINGS BEING EQUAL, IS A MEASURE OF ITS POWER...



... FIFTH, THE SHAPE OF THE BRAIN IS DETERMINED BY THE DEVELOPMENT OF THE VARIOUS ORGANS; AND SIXTH, AS THE SKULL TAKES ITS SHAPE FROM THE BRAIN, THE SURFACE OF THE SKULL CAN BE READ AS AN ACCURATE INDEX OF PSYCHOLOGICAL APTITUDES AND TENDENCIES.



IN OTHER WORDS, VARIOUS AREAS IN THE BRAIN GOVERN DIFFERENT INTELLECTUAL AND PERSONALITY CHARACTERISTICS AND BY MAPPING THESE AREAS ON THE SKULL CERTAIN TENDENCIES — FROM AGGRESSION TO PERCEPTION TO INTELLIGENCE — CAN BE IDENTIFIED.





**JOHANN KASPAR SPRUZHEIM, A DISCIPLE OF GALL,  
INTRODUCED THESE CONCEPTS INTO BRITAIN...**





**...AND BY THE 1840s, AUGUST COMTE HAD INCORPORATED THEM INTO HIS POSITIVE PSYCHOLOGY, GREATLY INFLUENCING EDUCATIONAL AND PENAL REFORM IN THE US AND BRITAIN.**



**COMTE'S APPROACH INVOLVED THE USE OF PHRENOLOGY AND CRANIOLOGY (THE STUDY OF SKULL SHAPES) IN ORDER TO IDENTIFY AND ADJUST DEVIANT BEHAVIORS.**





DETECTING CERTAIN PHYSICAL CHARACTERISTICS ASSOCIATED WITH DIFFERENT BEHAVIORS, EITHER APPROPRIATE OR INAPPROPRIATE PROVIDES A MEANS TO SELECT OUT SPECIFIC INDIVIDUALS IN NEED OF SPECIALIZED INSTRUCTION.



**Auguste Comte**

Father of

**Positive**

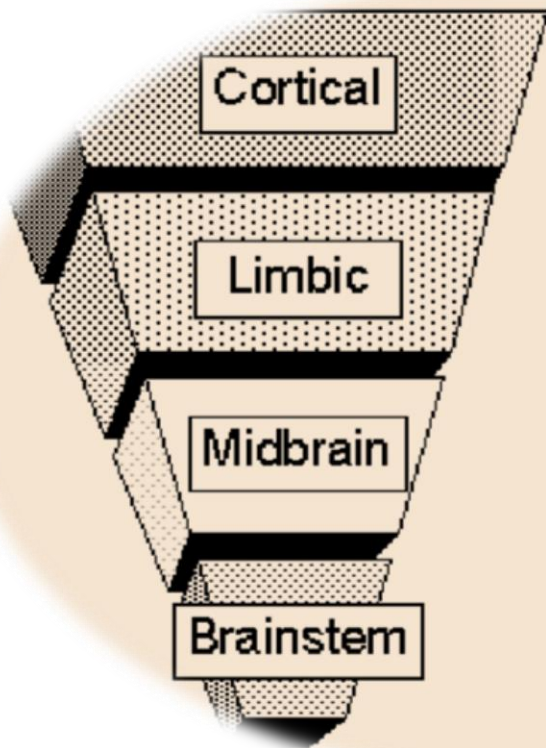
Philosophy



BY THE LATE 1800s, MOST SCIENTISTS REJECTED THE  
CONCEPT OF THE SHAPE OF THE SKULL REFLECTING  
PSYCHOLOGICAL CHARACTERISTICS, BUT GALL'S  
PRECEPTS DID HAVE TWO LASTING LEGACIES...



*...THE IDEA OF A HIERARCHY OF BRAIN DEVELOPMENT (THE MOST SIMPLE ORGANISMS HAVING THE MOST BASIC NERVOUS SYSTEMS AND HUMANS HAVING THE MOST COMPLEX)...*



Abstract Thought  
Concrete Thought  
Affiliation  
Attachment  
Sexual Behavior  
Emotional Reactivity  
Motor Regulation  
"Arousal"  
Appetite/Satiety  
Sleep  
Blood Pressure  
Heart Rate  
Body Temperature



**...AND THE RELATIONSHIP BETWEEN THE SHAPE OF THE SKULL AND INTELLECTUAL ABILITY.**



**Lion**



**Noble and Brave**



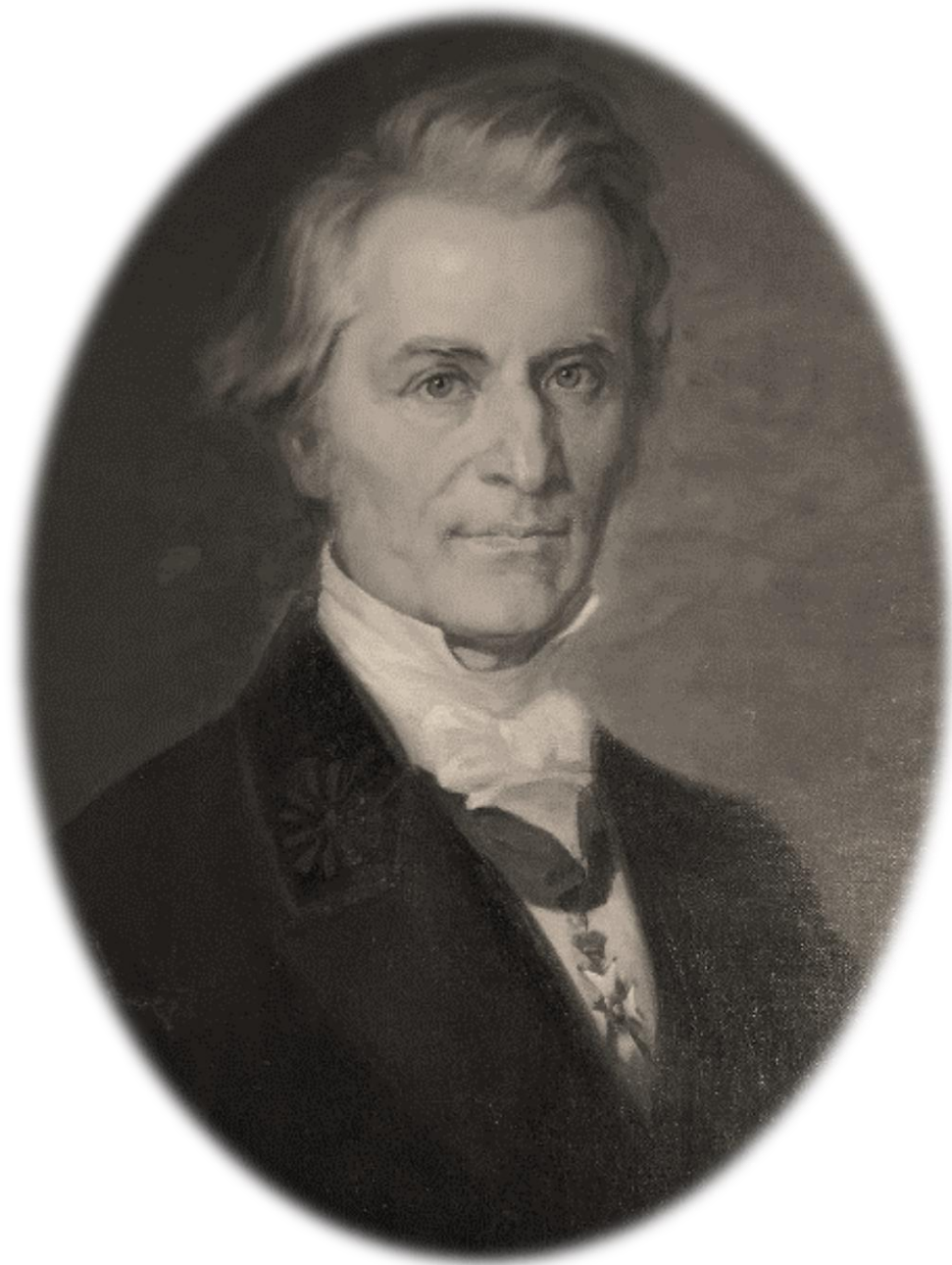
**Hog**



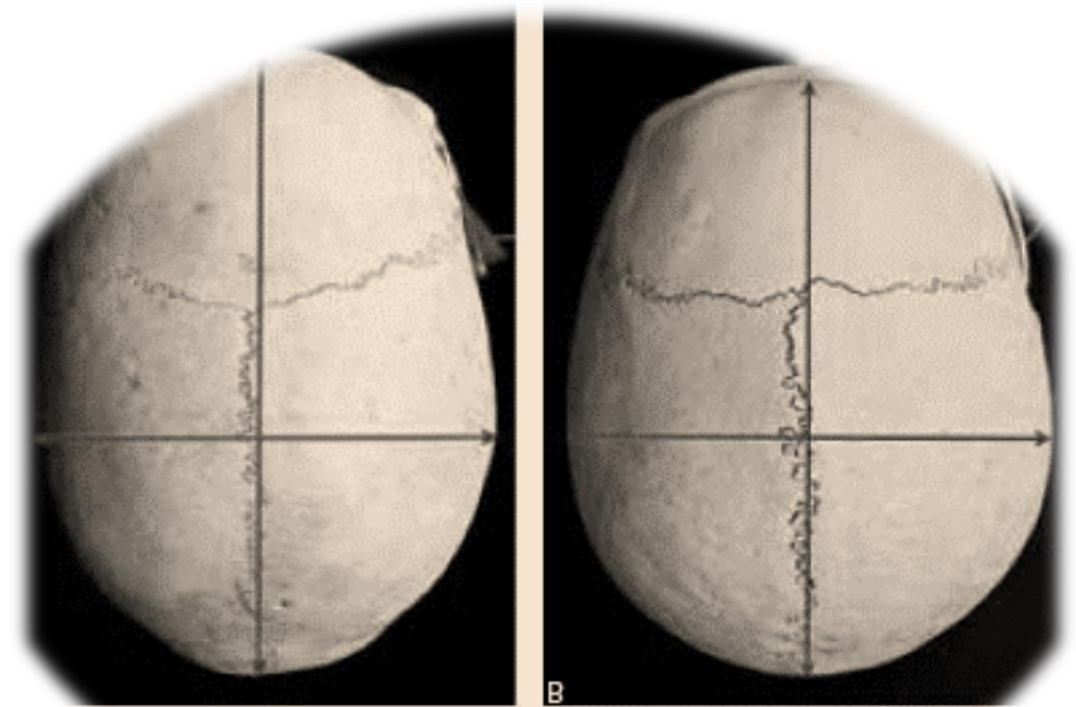
**Hoggish and**



ANDERS RETZIUS, A SWEDISH ANATOMIST, USED THESE CONCEPTS, AND HIS OWN ARCHEOLOGICAL AND LINGUISTIC RESEARCH, TO DEVELOP A EUROPEAN RACIAL HIERARCHY...



*...FROM THE SHORT-SKULLED BRACHYCEPHALICS,  
PRIMARILY MEDITERRANEANS, TO THE LONG-  
SKULLED DOLICHOCEPHALICS, PRIMARILY GERMANS.*



1 - Cranial index: Calculated using the ratio between the maximum width of the head and its maximum length of the head. In A, dolichocephalic skull and in B, brachycephalic skull.

**SADLY, THIS CLASSIFICATION BECAME THE BASIS FOR THE CONCEPT OF THE ARYAN RACE AND WAS NOT COMPLETELY REJECTED BY THE SCIENTIFIC COMMUNITY UNTIL A HUNDRED YEARS LATER.**





**FOR THE KNOWLEDGEABLE VICTORIAN, DR. MORTIMER'S OBSERVATION OF MY DOLICHOCEPHALY AND THE SUPRA-ORBITAL DEVELOPMENT WAS RECOGNIZED AS REPRESENTING BOTH SUPERIOR INTELLECTUAL DEVELOPMENT, AS WELL AS ADVANCED PERCEPTIVE SKILLS...**







*...CERTAINLY WELL-KNOWN ATTRIBUTES OF MYSELF  
— AND CALLED INTO QUESTION DR. MORIARTY'S  
ASSESSMENT WHICH OCCURRED PRIOR TO MY SELF-  
IMPOSED DISAPPEARANCE.*





*FOR THE PHRENOLOGIST, IT WILL SUGGEST AN INCREASE IN MY ALREADY-ADVANCED MENTAL POWERS, AND POINTS TO THE RESULT OF AT LEAST SOME OF MY ACTIVITIES FOLLOWING MY 'DEATH.'*



SO, WE HAVE COMPLETED TOPIC # 019 IN OUR SERIES...

IN TOPIC # 020, WE WILL LOOK AT THE MAIL SERVICE IN VICTORIAN ENGLAND.



## REFERENCES FOR THIS TOPIC:

- [HTTP://WWW.ENCYCLOPEDIA.COM/TOPIC/PHRENOLOGY.ASPX](http://www.encyclopedia.com/topic/phrenology.aspx)
- SALLY MITCHELL, VICTORIAN BRITAIN: AN ENCYCLOPEDIA (NEW YORK: GARLAND PUBLISHING, INC., 1988)
- CLARENCE RAY JEFFERY, THE HISTORICAL DEVELOPMENT OF CRIMINOLOGY, 50 J. CRIM. L. & CRIMINOLOGY 3 (1959-1960)
- KYLLINGSTAD, JON RØYNE. MEASURING THE MASTER RACE: PHYSICAL ANTHROPOLOGY IN NORWAY, 1890-1945. CAMBRIDGE, UK: OPEN BOOK PUBLISHERS, 2014, [HTTP://DX.DOI.ORG/10.11647/OBP.0051](http://dx.doi.org/10.11647/obp.0051)



# Baker Street *Elementary*

"THE LIFE AND TIMES IN VICTORIAN LONDON"

IS CREATED THROUGH THE INGENUITY & HARD WORK OF:

JOE FAY  
LIESE SHERWOOD-FABRE  
RUSTY MASON  
&  
STEVE MASON

