

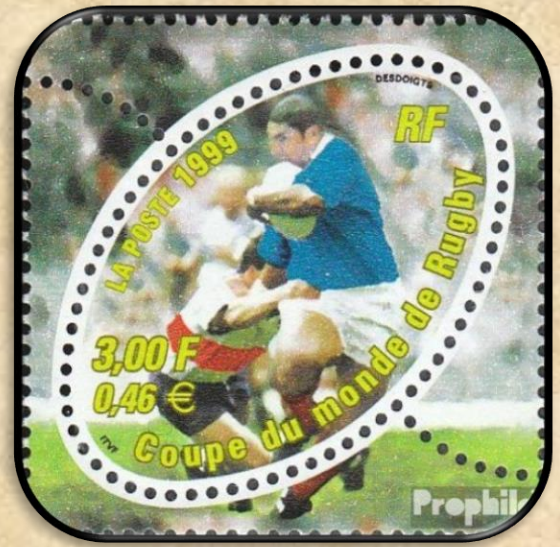
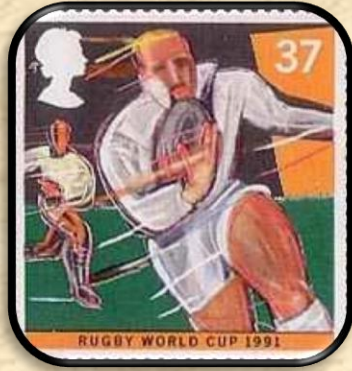
Adventure XLIX – The Adventure of the Missing Three-Quarter



Paul Churchill once quipped he had a hard time studying for Sherlockian quizzes, so inspired by Simon Goodenough's *A Study in Scarlet – A Sherlock Holmes Murder Dossier*, Paul began collecting Canonical artifacts around 1990 to help him remember each story. Over 1,500 artifacts later, Paul's 'Evidence Boxes' became legendary in the Sherlockian world as he displayed them at numerous Scion meetings.

What Paul could not find, he made. He became known as a master forger, and 'created' numerous 'genuine faux' objects, such as letters, documents, and telegrams. Paul was invested in the Baker Street Irregulars in 2006 as "Corot." After Paul's passing, the Evidence Boxes were bequeathed to Watson's Tin Box Scion Society, a Society Paul co-founded in 1989. Debbie Clark has maintained the Boxes and continues the practice of displaying the items from one of the Boxes at each society meeting.

Beth Austin assisted in this effort by photographing, annotating the items, and finding the quotes for many of the items, while Denny Dobry and Rusty Mason supported Paul's efforts by photographing each of the items, as well as developing a comprehensive inventory with notations of item's mentioned in the story. Each of the Boxes is posted with permission of Debbie Clark and Jacquelynn Morris.



Pictured are postage stamps honoring the sport of rugby.



Pictured is a set of stamps honoring hounds and other breeds of dogs in the United States.



Cambridge, Trinity Hall, Fellows' Garden.

POST CARD
FRITH'S SERIES

This Space may be used for Communication.

The Address only to be written here



F. Frith & Co., Ltd., Reigate, No. 7832 Printed in England.

*The Light Blues
wish to express
their gratitude
for all your efforts
in the search for our
missing three-quarter*

*Cyril Overton
P.S. Pompey sends his
greetings as does Jeremy Dixon.*

*Mr. Sherlock Holmes
221B Baker Street
London W1*

Pictured is the Cambridge University postal card from Cyril Overton by way of thanks to Holmes.



WELL-KNOWN TIES
A SERIES OF 50
47

BLACKHEATH RUGBY FOOTBALL CLUB.

The Old Blackheathen Club was formed in 1860 by the Old Boys of the Blackheath Proprietary School. It was not always possible to raise a team confined to the Old Boys, and in 1862 the Blackheath Club was founded. In 1882 the "Club" moved to its present ground at the Rectory Field, Blackheath. The illustration shows a "Club" versus Bradford match there. The Club colours are red and black barred jerseys, dark blue shorts and black stockings with red rings round the tops. The tie illustrated is that worn by the players; members who have played thirty times in the First XV wear a similar tie but with a single light blue stripe instead of the double.

W.A. & A.C. CHURCHMAN

Reproduction Authorised by Imperial Tobacco Ltd © 1998
Issued by Card Collectors Society

52
HOMELAND EVENTS

A SERIES OF FIFTY FOUR REAL PHOTOGRAPHS.
Rugby International Match.

Wales held the International Championship for the season 1930-31, and would have won every game had it not been for a magnificent penalty goal kicked for England by B.H. Black, half-a-minute from time at Twickenham. Our photo shows the match in progress between Scotland and France at Murrayfield, Edinburgh.

W.D. & H.O. WILLS
ISSUED BY THE IMPERIAL TOBACCO CO.
(OF GREAT BRITAIN & IRELAND) LTD



Pictured are cigarette cards depicting an interational rugby match involving Blackheath Rugby Football Club.

PART VI.

THE LAWS OF THE GAME.

THE RUGBY UNION.

(AS PLAYED BY THE RUGBY FOOTBALL UNION.)

I. INTRODUCTION.

1. The Rugby Game of Football should be played by 15 players on each side. (Anyone coming under the laws of professionalism shall not be allowed to take part in any game under this Union's jurisdiction.) The field of play shall not exceed 110 yards in length, nor 75 in breadth, and shall be as near these dimensions as practicable. The lines defining the boundary of the field of play shall be suitably marked, and shall be called the goal-lines at the ends and the touch-lines at the sides. On each goal-line and equidistant from the touch lines shall be two upright posts, called goal-posts, exceeding 11 feet in height, and placed 18 feet 6 inches apart, and joined by a cross-bar 10 feet from the ground; and the object of the game shall be to kick the ball over this cross bar and between the posts. The game shall be played with an oval ball of as nearly as possible the following size and weight, namely:—

Length	11 to 11½ in.
Length circumference	30 " 31 "
Width circumference	25½ " 26 "
Weight	13 " 14½ oz.
Hand sewn and not less than 8 stitches to the inch.					

II. GLOSSARY—DUTIES OF OFFICIALS—SCORING.

2. The following terms occur in the laws, and have the respective meanings attached to each:—

DEAD-BALL LINE. Not more than 25 yards behind and equidistant from each goal-line, and parallel thereto, shall be lines, which shall be called the Dead-Ball Lines, and if the ball or player holding the ball touch or cross these lines the ball shall be dead and out of play.

Pictured is the laws of the game, issued by the Rugby Union, as played by the Rugby Football union.

Mr. Sherlock Holmes

*221b, Baker Street.
London,*

*Consulting
Detective*

Cyril Overton

Trinity College

Cambridge

Pictured is the visiting, or calling, cards for Sherlock Holmes and Cyril Overton.

From the story:

He held my friend's card in his hand, and he looked up with no very pleased expression upon his dour features.

As we expected, the telegram was soon followed by its sender, and the card of Mr. Cyril Overton, of Trinity College, Cambridge, announced the arrival of an enormous young man.

N.B.—This Form must accompany any inquiry respecting this Telegram.



W. & A. SPOTTISWOODE, Ltd., Lond.

POST OFFICE TELEGRAPHS.

If the Receiver of an Inland Telegram doubts its accuracy, he may have it repeated on payment of half the amount originally paid for its transmission, any fraction of 1d. less than $\frac{1}{2}$ d. being reckoned as $\frac{1}{2}$ d.; and if it be found that there was any inaccuracy, the amount paid for repetition will be refunded. Special conditions are applicable to the repetition of Foreign Telegrams.

Office of Origin and Service Instructions.



Charges } s. d.
to pay }

Strand Post Office, London

Handed }
in at } *10.20 AM*

Received }
here at } *10.36 A.M.*

TO { *Mr Sherlock Holmes, 221B Baker Street, London NW1*

*Please await me. Terrible misfortune. Right wing
three-quarter missing; indispensable to-morrow.*

— Overton

Pictured is the telegram from Overton requesting Holmes' assistance.

From the story:

'Please await me. Terrible misfortune. Right wing three-quarter missing. Indispensable to-morrow. OVERTON'



Blackheath Rugby Football Club- 1875

Front Row: P. Chapman, T. Corvell, M. Rudy, A. Roman, E. Layton

*Middle Row: S. Robinson, C. Robinson, R. Johnson, S. Clarkson, A. Cohoe,
R. Davis, D. Richards*

*Back Row: J. Sanchez, D. Swede, W. Trolley, R. Ferguson, C. Dsily, D. Trump,
J. Watson, B. Orr*

Pictured is the team picture for the Blackheath football team from 1875, one of teams Staunton played for.

From the story:

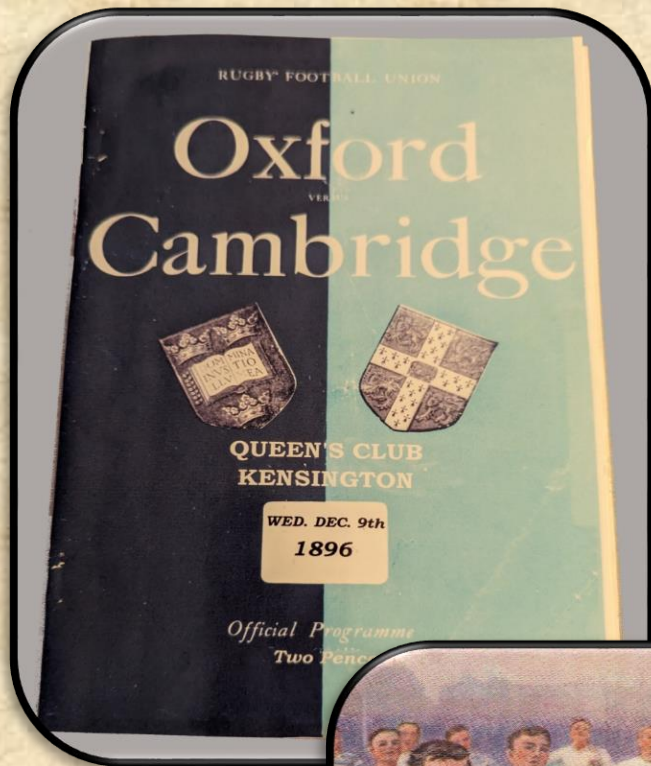
‘I didn't think there was a soul in England who didn't know Godfrey Staunton, the crack three-quarter, Cambridge, Blackheath, and five Internationals.’



Pictured is the medal for the Blackheath Harriers, the rugby team which Staunton and Watson both played for.

From the story:

‘I didn't think there was a soul in England who didn't know Godfrey Staunton, the crack three-quarter, Cambridge, Blackheath, and five Internationals. Good Lord! Mr. Holmes, where have you lived?’



FOOTBALL INCIDENTS. After the black & white drawing by C. M. P. D.D.S. OXFORD vs. CAMBRIDGE (Rugby).

Pictured is the match program between Oxford and Cambridge, as well as a postal card commemorating the annual match.

From the story:

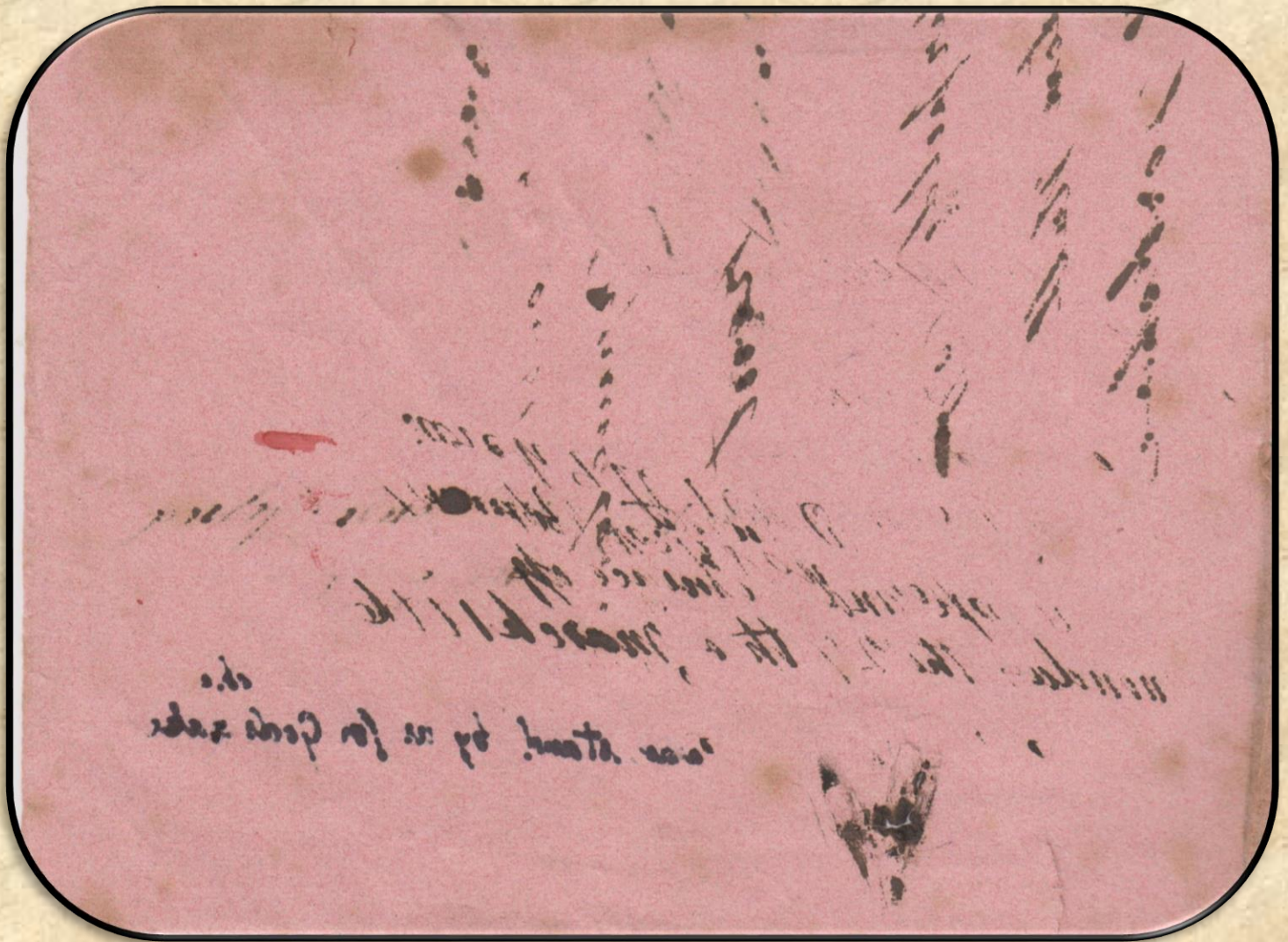
‘As I have said, I am the skipper of the Rugger team of Cambridge Varsity, and Godfrey Staunton is my best man. To-morrow we play Oxford.’



Pictured is the Cambridge light blue rugby shirt and the Oxford dark blue rugby shirt.

From the story:

'As I have said, I am the skipper of the Rugger team of Cambridge Varsity, and Godfrey Staunton is my best man. To-morrow we play Oxford.'



Pictured is the blotter paper containing the words from Godfrey's telegram, which Holmes used as a clue to Staunton's location.

From the story:

'I can hardly doubt that we will find some impression upon this blotting-pad. Ah, yes, surely this is the very thing!'

No. of Message
2457

POST OFFICE TELEGRAPHS.
(Inland Telegrams.)

Office of Origin and Service Instructions. Strand P.O. / Delivery by Mounted Messenger. Most urgent	Words 23	Sent At 6.15 p.m.
	Charge 2/3	To Cambridge By [Signature]

(A Receipt for the Charges on this Telegram can be obtained, upon request.)

FROM **Bentley's Hotel** Please Write Distinctly
the Strand Post office, London

Address Recd.
**Dr Lucie Armstrong
27 University Blvd
Cambridge**

3/-	<i>Am waiting as patiently as possible. Until I know will remain at shore hotel. I beg you, stand by us for God's sake</i>	
1/8		
1/6		

BALANCE OF PORTERAGE

REFUNDED

NOTICE TO THE SENDER OF THIS TELEGRAM.
This Telegram will be accepted for transmission subject to the Regulations made pursuant to the 15th Section of the Telegraph Act, 1868, and to the Notices printed at the back hereof.

HARRISON & BONE, PRINTERS, LONDON.

Pictured is the telegram from Staunton to Dr. Armstrong trying to find more information about his wife.

From the story:

'Did you take any message to Mr. Staunton?'

'Yes, sir; one telegram.'

BK 1374

UP Stables

Victoria Tavern,
Uxbridge Road

Clarendon Road

Notting Hill Gate

Queen's Road

Marble Arch

Oxford Circus

Tottenham Ct Rd

Chancery Lane

Holborn Circus

Mansion House

Liverpool Street

DOWN

THE LONDON GENERAL OMNIBUS COMPANY, LD.

This Ticket to be shown on demand.

This Ticket must be put in the Section to which the Passenger is entitled to travel.

NEW OXFORD ST. ALDGATE: BOROUGH: PECKHAM:
57 to 59. 83 to 85. 161 to 163. RIV. APPROACH.

Try our 24/- Suits to Measure. "Special Value."

WE HAVE NO RIVAL!

Tailors
AND GENERAL OUTFITTERS.

Largest, Cheapest & Best Assorted Clothings

THE LONDON HOUSE

Bell Punch Company, Printers

Ci 0441

LONDON TRANSPORT BUSES

1 ROUTE 73 FT

1	Richmond Wakefield Rd	Marble Arch	17
2	Church Rd Richmond	St. Georges Hospital	16
3	Sheen Black Horse	Knightsbridge Station	15
4	East Sheen Derby Arms	Exhibition R Albert Hall	14
5	Sheen Lane	Kensington Church	13
6	Sutherland Gardens	Earls Court Road	12
7	Barnes Com. City Hotel	Olympia H Smith Rd	11
8	Red Lion Barnes	Brook Green Hotel	11
9	Castelnau Boileau A	Smith Broadway	10

Bell Punch Company, Ltd., London.

Ih 7906

LONDON TRANSPORT BUSES

1 ROUTE 73 FT

1	Richmond Wakefield Rd	Marble Arch	17
2	Church Rd Richmond	St. Georges Hospital	16
3	Sheen Black Horse	Knightsbridge Station	15
4	East Sheen Derby Arms	Exhibition R Albert Hall	14
5	Sheen Lane	Kensington Church	13
6	Sutherland Gardens	Earls Court Road	12
7	Barnes Com. City Hotel	Olympia H Smith Rd	11
8	Red Lion Barnes	Brook Green Hotel	11
9	Castelnau Boileau A	Smith Broadway	10

Bell Punch Company, Ltd., London.

LONDON TRANSPORT BUSES

1 ROUTE 73 BK

WHEN WORKING	4	Bond Street Oxford St	18
	3	Oxford Circus	19
	2	Tott. Court Road Stn	20
	1	Goodge St or Wren St Stn	21
29	Newington Nthwold Rd	Euston Stn L.M.R.	22
28	Albion Road Church St	Kings X & St Pancras Stns	23
27	Newington Green Lane	Hillington The Angel	24
26	St Pauls Road	Essex Road Station	25

Available to point indicated by punch-hole and must be shown on demand. NOT TRANSFERABLE.

LONDON TRANSPORT BUSES

1 ROUTE 73 BK

WHEN WORKING	4	Bond Street Oxford St	18
	3	Oxford Circus	19
	2	Tott. Court Road Stn	20
	1	Goodge St or Wren St Stn	21
29	Newington Nthwold Rd	Euston Stn L.M.R.	22
28	Albion Road Church St	Kings X & St Pancras Stns	23
27	Newington Green Lane	Hillington The Angel	24
26	St Pauls Road	Essex Road Station	25

Available to point indicated by punch-hole and must be shown on demand. NOT TRANSFERABLE.

Pictured are used omnibus tickets for Route 73 and Tottenham Road/Victorian Tavern.

From the story:

‘My name is Lord Mount-James. I came round as quickly as the Bayswater bus would bring me. So you have instructed a detective?’



Pictured is a model of the omnibus Lord Mount-James took to meet Holmes at Staunton's.

From the story:

'My name is Lord Mount-James. I came round as quickly as the Bayswater bus would bring me. So you have instructed a detective?'

LESLIE ARMSTRONG, M.D.
lecturer and consultant
27 University Blvd., Cambridge

Rec'd

*thirteen Guineas
for services rendered, 5 November 1896,
to Godfrey Staunton*

Rec'd with Thanks 5/11/16



Leslie Armstrong M.D.

Pictured is the receipt from Dr. Armstrong for his medical services to Godfrey Staunton and his deceased wife.

From the story:

It argues the degree in which I had lost touch with my profession that the name of Leslie Armstrong was unknown to me. Now I am aware that he is not only one of the heads of the medical school of the University, but a thinker of European reputation in more than one branch of science.



Pictured is the cycling map of the Cambridge area which Holmes used to follow Dr. Armstrong.

From the story:

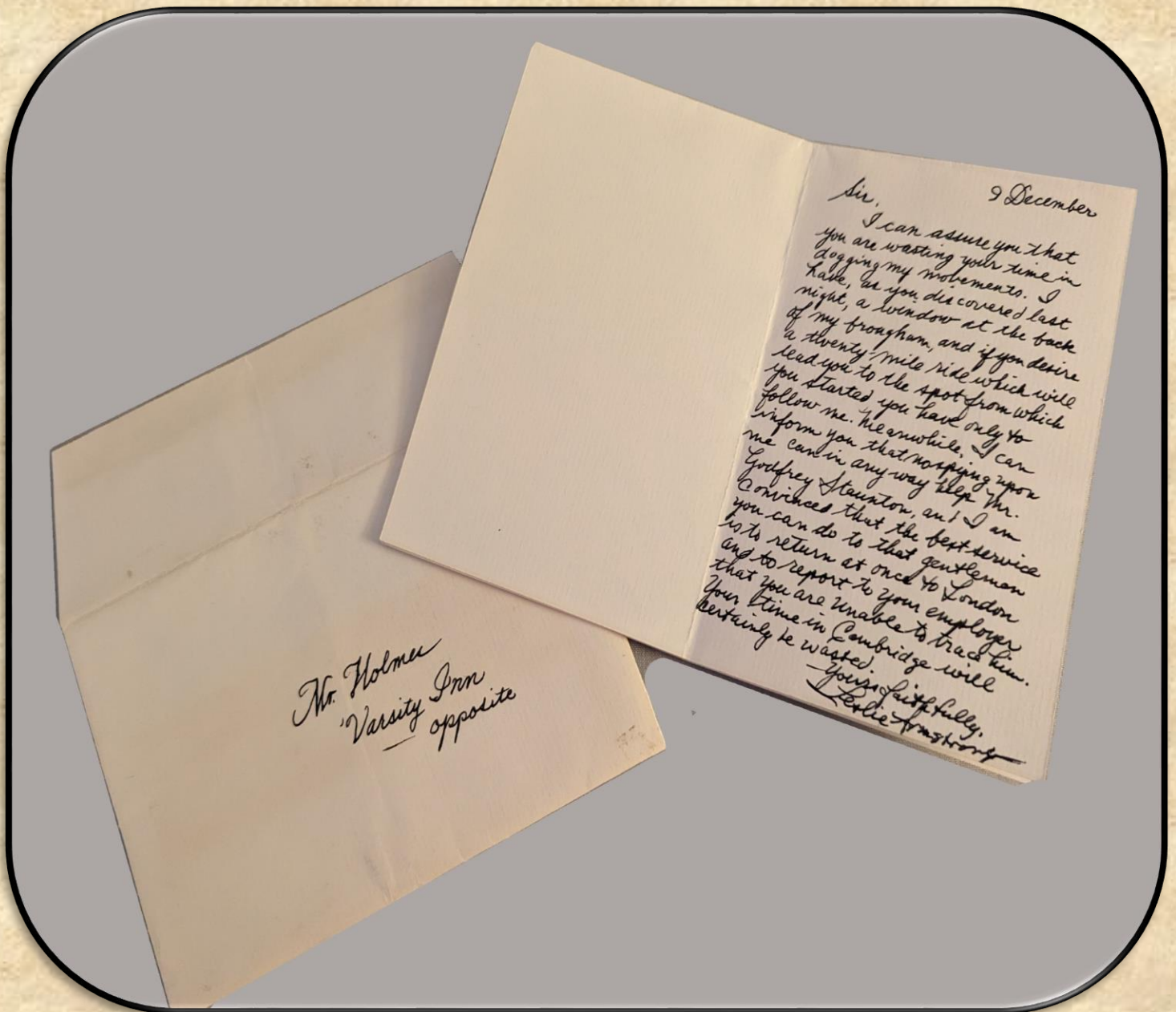
‘I rushed, engaged a bicycle, and was able to get started before the carriage was quite out of sight.’



Pictured is the badge from the bicycle Holmes used to follow Dr. Armstrong.

From the story:

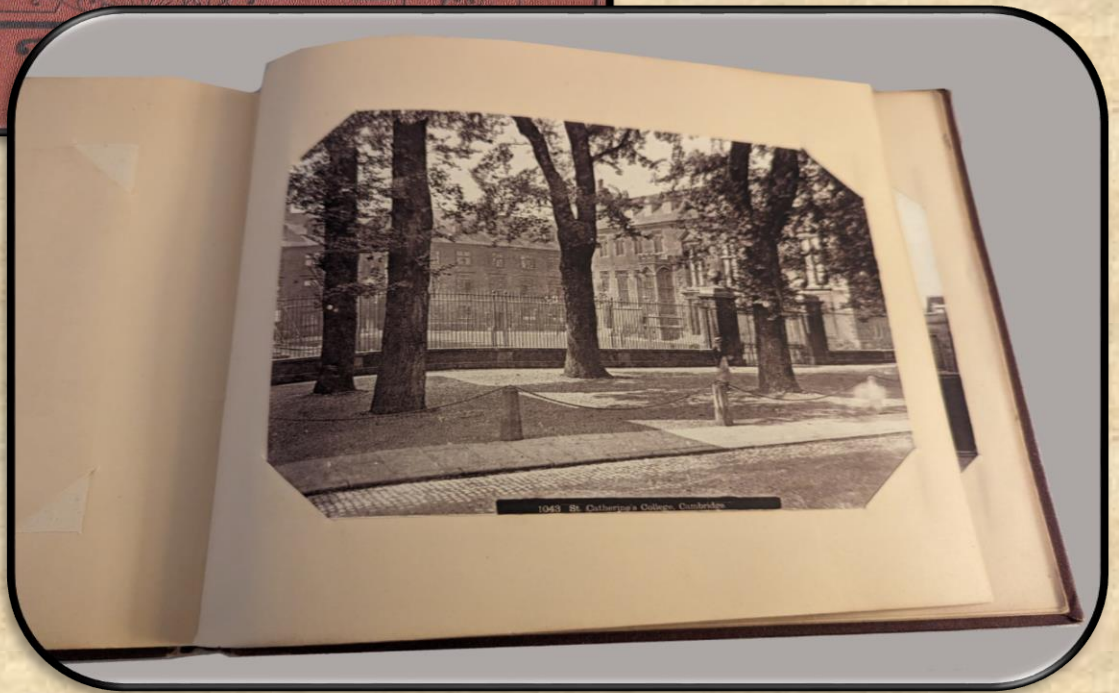
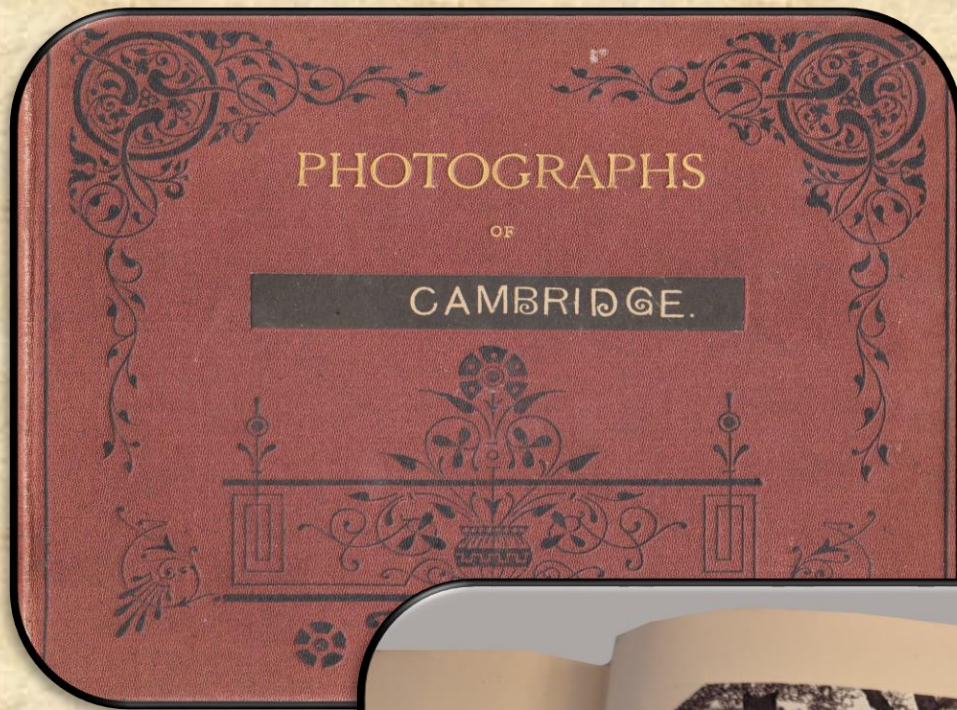
‘Into this I rushed, engaged a bicycle, and was able to get started before the carriage was quite out of sight.’



Pictured is the letter sent to Holmes from Dr. Armstrong, rebuking him for trying to follow him.

From the story:

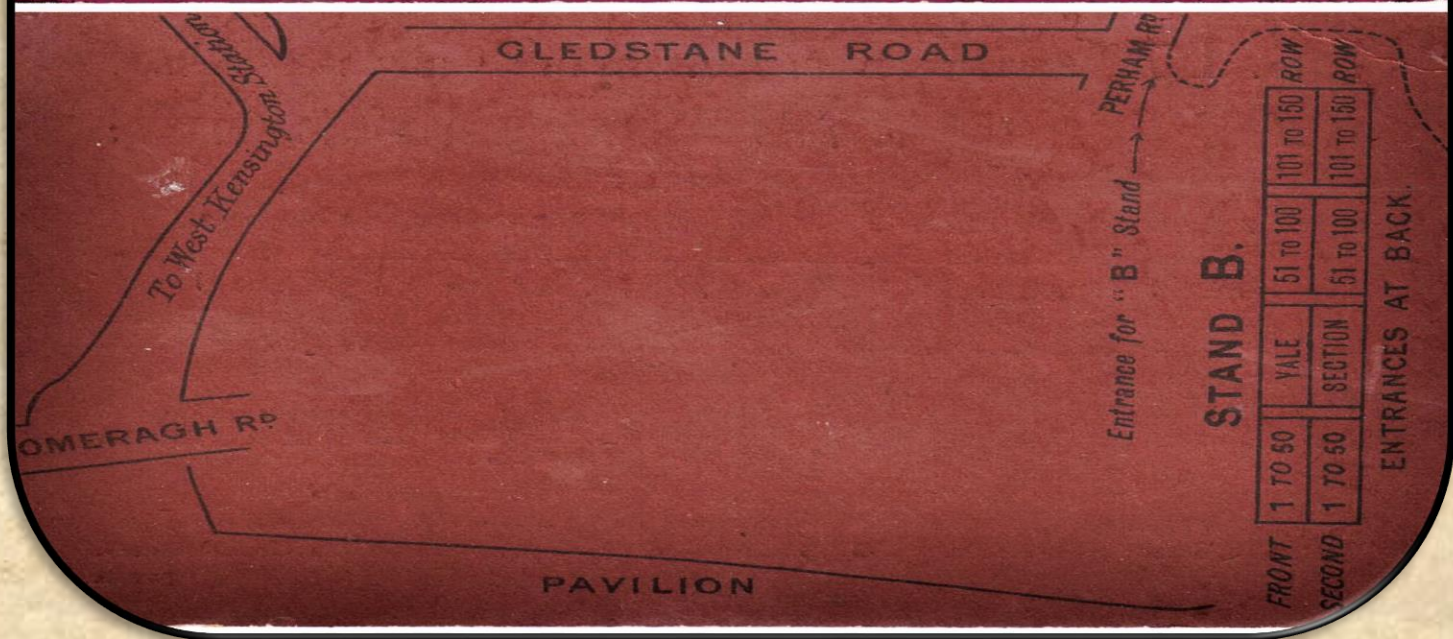
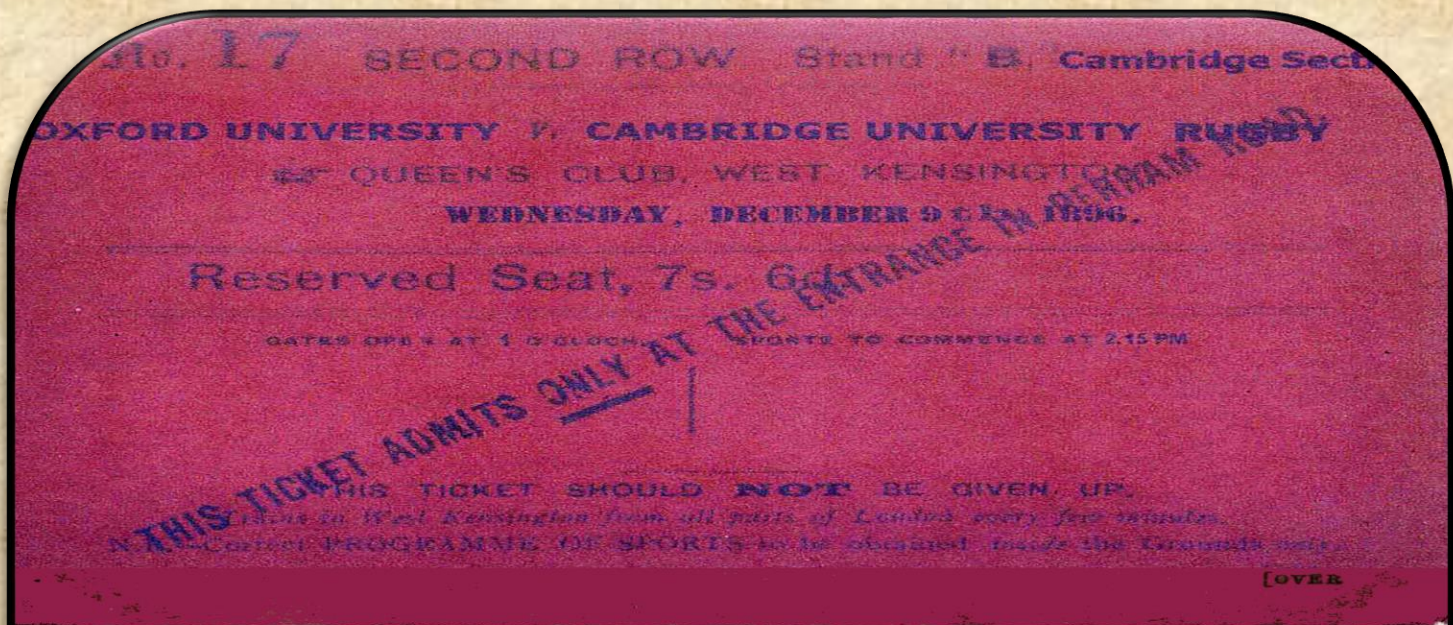
And yet the next day brought us no nearer to the solution of the mystery. A note was handed in after breakfast, which Holmes passed across to me with a smile.



Pictured is a book of photos from Cambridge University, where Overton and Staunton attended.

From the story:

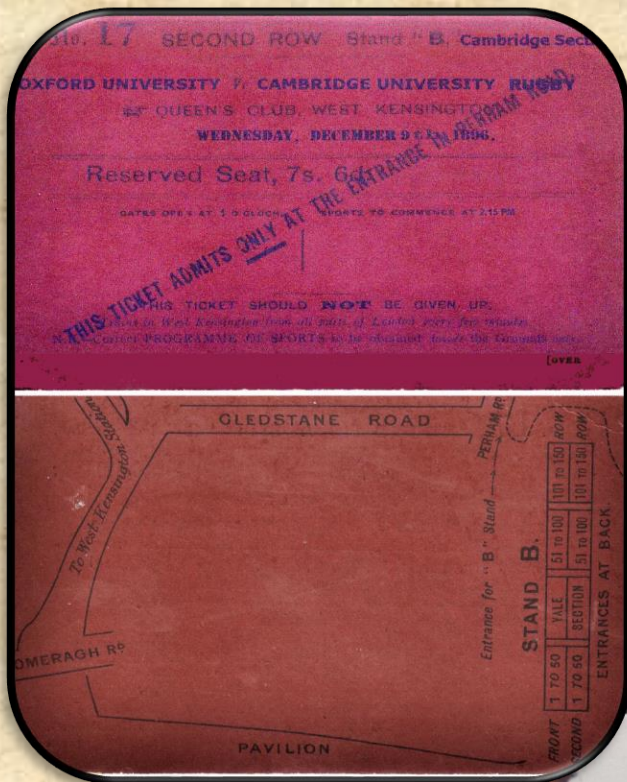
‘You are not familiar with Cambridgeshire scenery, are you? It does not lend itself to concealment.’



Pictured is a ticket for the Oxford versus Cambridge on match, Dec. 9, 1896.

From the story:

‘Yes, the local evening paper has an excellent account in its last edition. Oxford won by a goal and two tries.’



Pictured is a ticket to the 1896 Oxford / Yale rugby match, as well as a set of rugby playing cards.

From the story:

‘Yes, the local evening paper has an excellent account in its last edition. Oxford won by a goal and two tries.’

No. of Message
2469
8 Dec 1896

POST OFFICE TELEGRAPHS.
(Inland Telegrams.)

Office of Origin and Service Instructions.
Cambridge Postoffice
by Special Messenger

Words **25**
Charge **2/-**

Sent At **7.10 P.M.**
To **London**
By **[Signature]**

FROM Please Write Distinctly

Sherlock Holmes
% Variety Inn
Cambridge

Addresses Free.

Cyril Overton
% Bentley's Private Hotel
The Strand, London

	Let	us	know	any	fresh
3/-	London	developments	at	the	above
	address	- Holmes	P.S.	Where	can
	↓	get	a	tracking	log?
2/6					
1/6					

BALANCE OF PORTERAGE REFUNDED

NOTICE TO THE SENDER OF THIS TELEGRAM.
This Telegram will be accepted for transmission subject to the Regulations made pursuant to the 15th Section of the Telegraph Act, 1868 and to the Notice printed at the back hereof.

(HARRISON & SONS, PRINTERS, LONDON.)

Pictured is the telegram from Holmes requesting an update from Overton and where to find tracking dog.

From the story:

'It is from our friend Overton, and is in answer to a question from me.'

N.B.—This Form must accompany any inquiry made respecting this Telegram.

N.B.—This Form must accompany any inquiry respecting this Telegram.



EMERSON & SPOTTISWOODE, LTD., LOND.

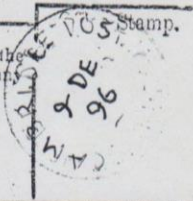
POST OFFICE TELEGRAPHS.

If the Receiver of an Inland Telegram doubts its accuracy, he may have it repeated on payment of half the amount originally paid for its transmission, any fraction of 1d. less than $\frac{1}{2}$ d. being reckoned as $\frac{1}{2}$ d.; and if it be found that there was any inaccuracy, the amount paid for repetition will be refunded. Special conditions are applicable to the repetition of Foreign Telegrams.

Office of Origin and Service Instructions.

Strand P.O., London

Charges } s. d.
to pay }



Handed }
in at } 6.05 P.M.

Received }
here at } 6.07 P.M.

TO { Mr Sherlock Holmes, Varsity Inn, Cambridge

Ask for Pompey from Jeremy Dixon, Trinity College.

Pictured is the telegram from Overton providing Holmes information on where to find a tracking dog.

From the story:

'Yes; I opened it. Here it is: 'Ask for Pompey from Jeremy Dixon, Trinity College.' I don't understand it.'



In Loving Memory

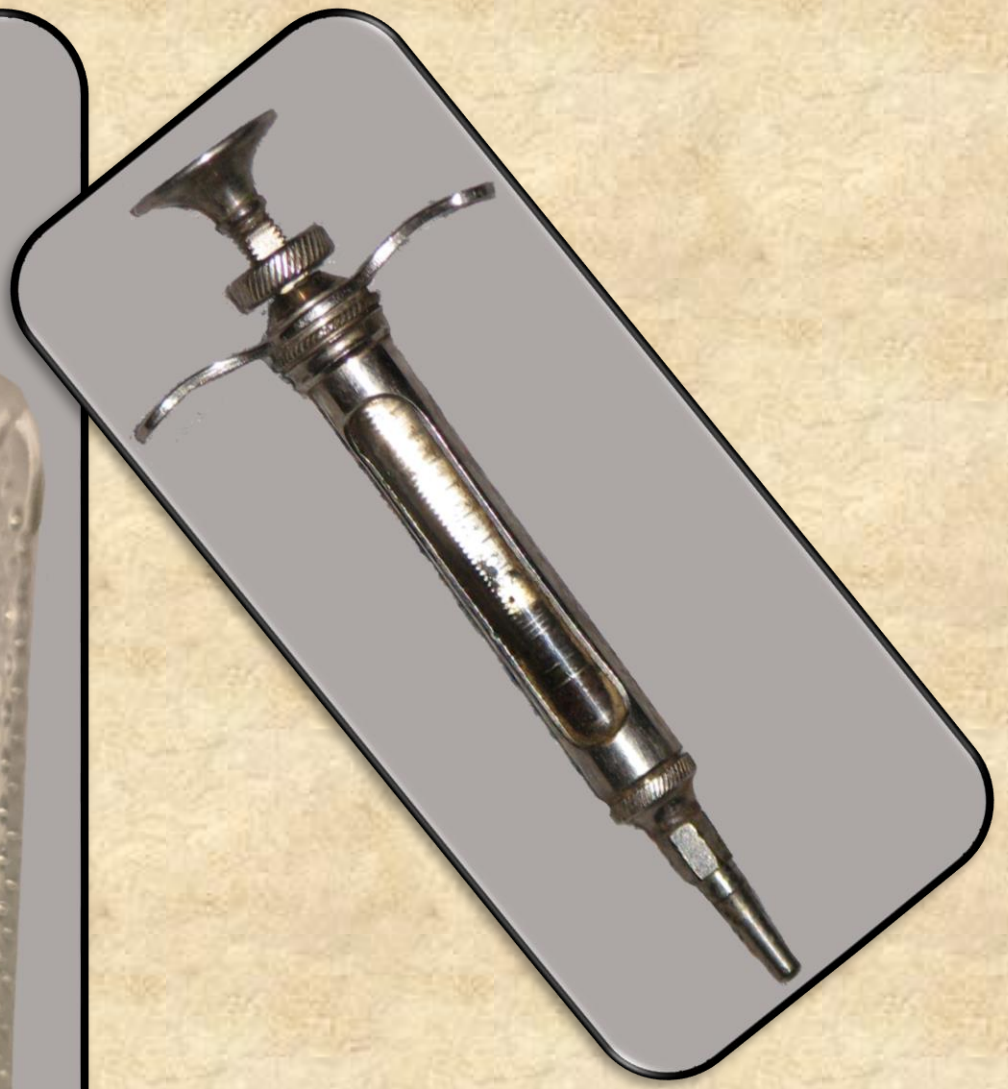
Of *Cambridge Light Blues*, who died whilst
competing for the honour of their school
against *Oxford 'Varsity Dark Blues*
at *Queen's Club, Kensington*
on *9 December 1896*.

Boldly to the fray they went,
But got beaten to their sorrow;
They were put to sleep by a better team,
And the funeral's tomorrow.

Pictured is the 'death card' issued by the victorious school to the defeated school, simply to rub the loss in more.

From the story:

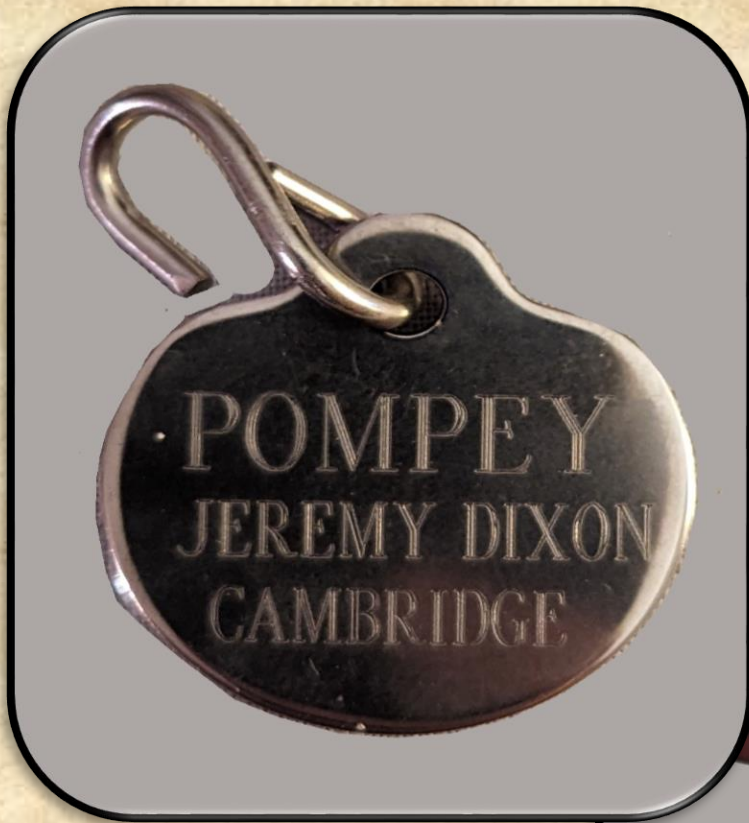
'Yes, the local evening paper has an excellent account in its last edition. Oxford won by a goal and two tries.'



Pictured is the anise extract, as well as the syringe, used by Holmes to enable the draghound Pompey to follow Armstrong's carriage.

From the story:

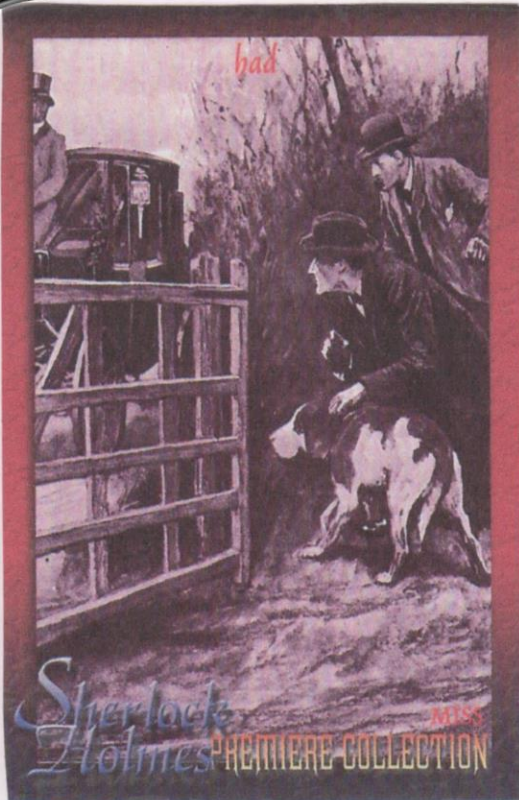
'I walked into the doctor's yard this morning and shot my syringe full of aniseed over the hind wheel.'



Pictured is Pompey's lead and dog tag. The hound was used to track the aniseed Holmes had applied to Dr. Armstrong's carriage.

From the story:

'A drag-hound will follow aniseed from here to John o' Groats, and our friend Armstrong would have to drive through the Cam before he would shake Pompey off his trail.'



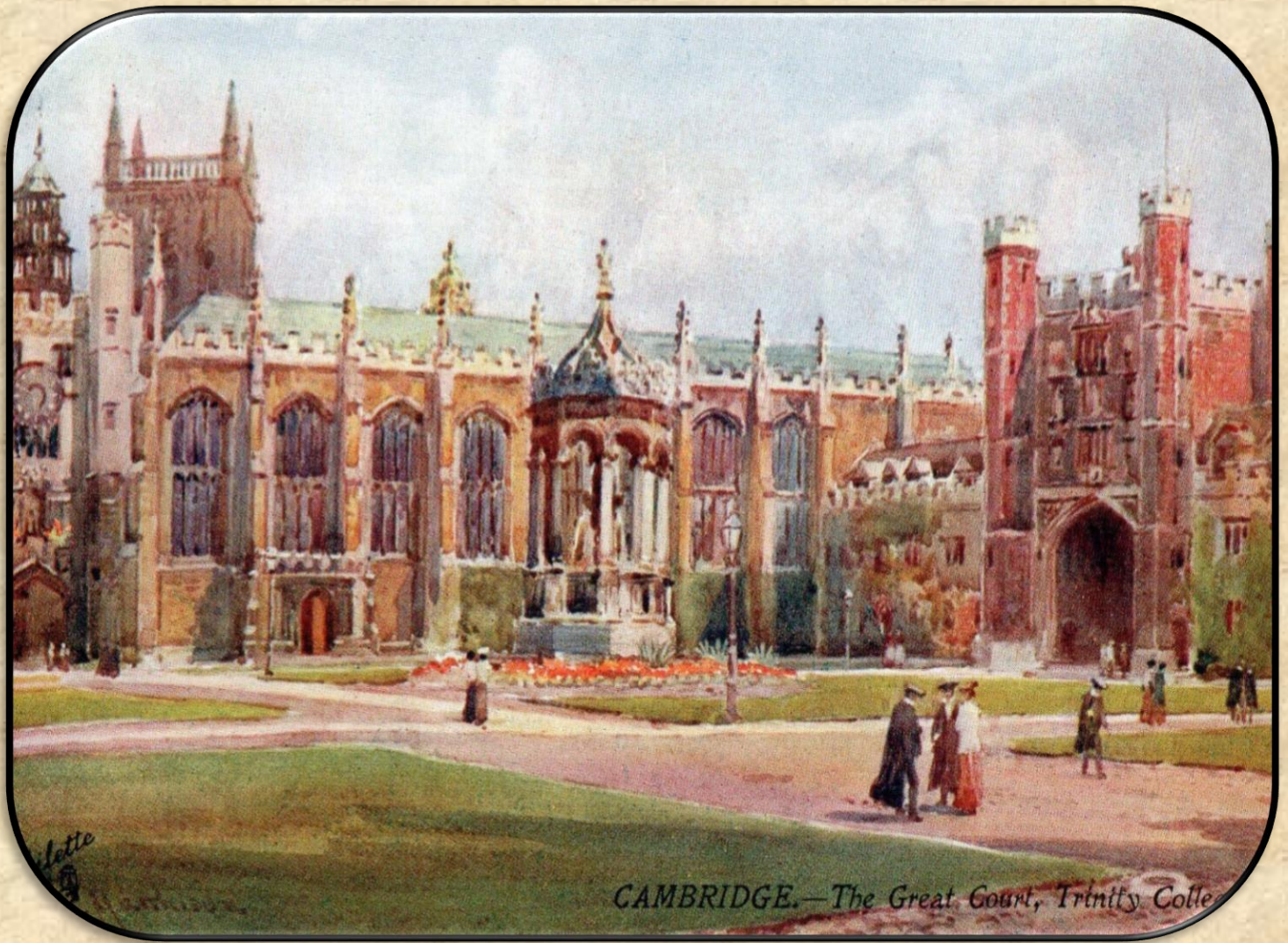
DR. LESLIE ARMSTRONG
CAMBRIDGE MEDICAL SCHOOLS
CAMBRIDGE,
ENGLAND

Pictured is a letter to Dr. Armstrong from Staunton, asking for the doctor's assistance with Staunton's wife.

From the story:

'But at last there came a terrible blow in the shape of dangerous illness to his wife. It was consumption of the most virulent kind.'

Additional items of interest
in “The Adventure of the
Missing Three-Quarter” not
included in the original
Evidence Box.



Pictured is a postal card for the Great Square at Trinity College, Cambridge University.

From the story:

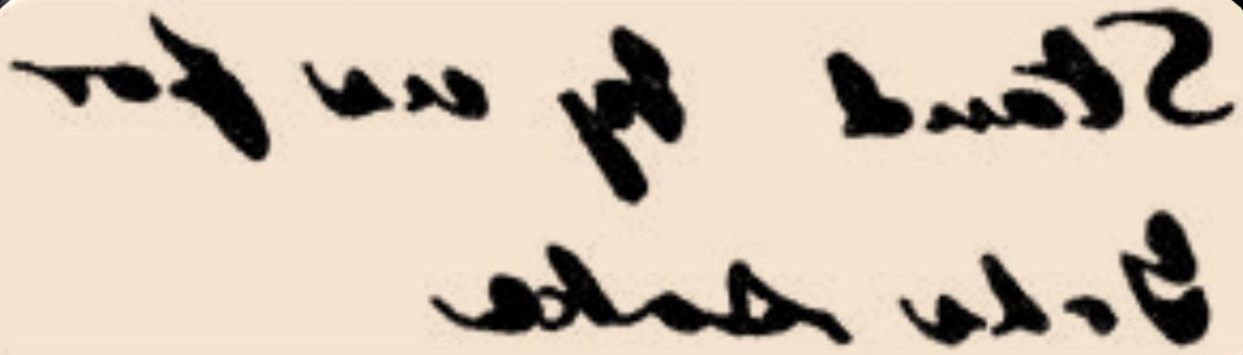
As we expected, the telegram was soon followed by its sender, and the card of Mr. Cyril Overton, of Trinity College, Cambridge, announced the arrival of an enormous young man...



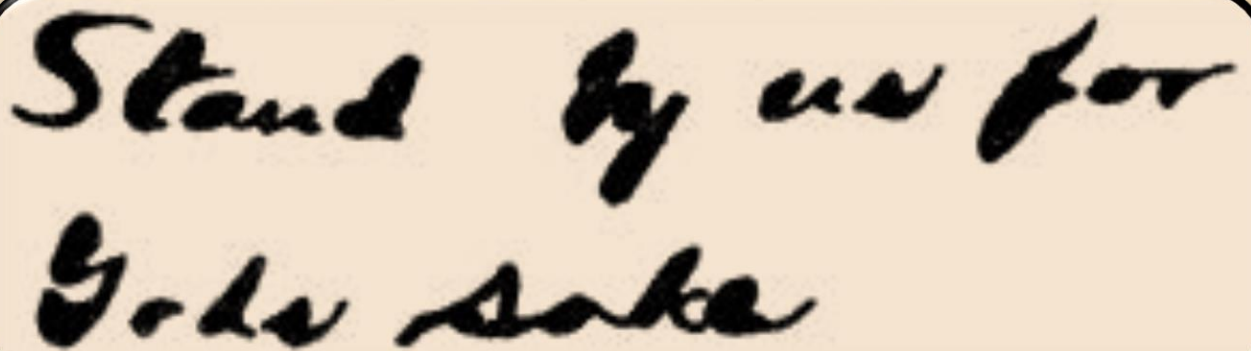
Pictured is a postal card for Bentley's Private Hotel in London, where the Cambridge rugby team was staying.

From the story:

'To-morrow we play Oxford. Yesterday we all came up and we settled at Bentley's private hotel.'



Stand by us for
Gods sake



Stand by us for
Gods sake

Pictured is what Holmes found on the blotting paper and what it read once it was held up to the mirror.

From the story:

‘I rejoice, however, to perceive that he wrote with a broad-pointed quill pen, and I can hardly doubt that we will find some impression upon this blotting-pad. Ah, yes, surely this is the very thing!’