

## Description of Completed Project:

The Sherlock Holmes Murder Mystery Lock-in event at the Lewis and Clark Library (LCL) East Helena Branch (EHB) took place on December 27<sup>th</sup> from 7pm to December 28<sup>th</sup> at 7am and had nine middle school attendees. All public middle schools in the Helena Valley were represented by the attendees; four different schools. Five adults helped with the lock-in: two volunteers and three library employees.

The evening began with one attendee not arriving at the start of the event. Once she was called it was determined that she had not received the letter that informed her that she was an attendee. Fortunately, she lives close to the library and was able to come to the lock-in on short notice.

Once everyone was at the library, the attendees decorated lidded jars that were to be their water drinking glasses throughout the event. Participants then donned costumes and started the Murder Mystery part of the lock-in. It went quickly, with each attendee reading the character assigned to him or her with enthusiasm. A few of the attendees even added an accent to the character! The Murder Mystery was narrated by Andrea Eckerson, the Jan Stauber Grant recipient. Photos were taken with the cardboard cut-out of Sherlock Holmes both with individuals and with the group, which are included in this write-up.

All planned events went quickly once the event was underway. Eckerson had a schedule of activities broken down into 1-1 ½ hour increments and the attendees were so quick to listen to directions and to complete the activities, that it became a concern that they'd run out of things to do. Activities that the participants did with the help of the adults are as follows: reading aloud of Sherlock Holmes limericks found at <http://www.sherlockholmes-fan.com>; board games such as checkers, card games, and Clue (photos included); decorating of pillow cases; relay games like carry the foam ball on a spoon balanced between one's teeth and pop the underinflated balloon (prizes were given for the most successful teams in the relays); yoga; and hide-and-seek in the dark (prizes given for best hiding spots and longest to hide).

Thankfully, the activities stretched just long enough beyond the pizza dinner at midnight that the two Robert Downey, Jr. Sherlock Holmes movies were able to be shown to allow attendees and adults to settle down for a few hours. Four of the participants stayed awake and quietly played card games while the remaining five slept in front of the movie screen.

At 6:00am, the participants were woken up so that they could eat breakfast, gather belongings, and sign thank you notes for all of those who made this lock-in a success. The participants went home with new books, prizes, water bottles, pillow cases signed by their new friends and adults, and lifelong memories. All nine attendees got along very well with one another. It is imagined that when they see one another, they will refer to one another by the murder mystery character they played!

As follow up to the lock-in, Eckerson has sent out the photos of the participants with the cardboard cutout, certificates of participation, and thoughtful questions for the book that they received.

The project goal “to introduce students from the East Valley Middle School to Sherlock Holmes with a Murder Mystery Lock-in by using a Murder Mystery kit and other activities encapsulating Sherlock Holmes so that the 11-14-year-old participants will have a fun, hands-on, interactive introduction and reinforcement to Sir Arthur Conan Doyle’s Sherlock Holmes” was a success. The participants said many times that they were having fun, they asked great questions throughout the murder mystery, and they were introduced or further exposed to Sherlock Holmes through the various activities.

The participants learned a bit about listening for clues and eliminating suspects through deductive reasoning while performing the murder mystery. It was interesting that several participants guessed an unlikely character as the murderer, so they learned that assumptions are not always correct (the character was the innocent Mrs. Marbles, who the participants thought guilty because she seemed so innocent)!

Eckerson (grantee) was impacted by the project by learning a great deal more about Sherlock Holmes as she prepared for the lock-in, gaining a more comfortable and trusting relationship with the participants, and planning and implementing an event of this magnitude. Eckerson also reached out for help from staff, friends, and volunteers to ensure the success of this project. It would not have been possible without their assistance.

EHB was impacted by the project by realizing that publicity for a lock-in must be done through Helena media channels because of the reluctance of the East Helena Public School (EHPS) Superintendent’s support for lock-ins. The number of participants reached a total of nine because the LCL Public Information Officer, Patricia Spencer, was able to get the local paper to pick up the event resulting in its publication. The link to the article is [https://helenair.com/news/local/secrets-subterfuge-and-sherlock-east-helena-library-to-host-holmes/article\\_68a8acdf-0403-5470-bb59-af2b056a84c9.html](https://helenair.com/news/local/secrets-subterfuge-and-sherlock-east-helena-library-to-host-holmes/article_68a8acdf-0403-5470-bb59-af2b056a84c9.html). Other impacts on EHB through the project are that participants and the Helena community are now aware of the library and its programming, Sherlock Holmes makes for a great programming theme at any time, grants are a great way to get financial support for a program, and lock-ins are not an exciting prospect for everyone but can be accomplished with help and support from others.

Participants were impacted by the project because of friendships and memories formed through twelve hours of interpersonal activities. Although the participants gravitated towards their existing friendships, they still interacted with those they didn’t know well through the ice breaking games, crafts, and other activities throughout the night. It was fun to see the barriers come down as the participants became comfortable with one another. Participants also gained knowledge of Sherlock Holmes, various board and card games, problem solving with deductive reasoning, and EHB library and its offerings.

Photos of the Lock-in:



Bruce Bugatti



Brigadier Balderdash



Penny Pusher



Rev. Al Lation



Nicole De'limelite



Doug Oles



Lotta Balderdash

Max Outputt



Anna Glipta



Miss Jane  
Marbles  
(Branch  
Librarian  
Diane Potter)  
and Crew



Narrator and  
Grantee  
Andrea  
Eckerson



Reading of the scripts for the Murder Mystery: Murder at Merkister Hall.





Limericks  
about  
Sherlock  
Holmes



Playing  
the Board  
Game



Clue



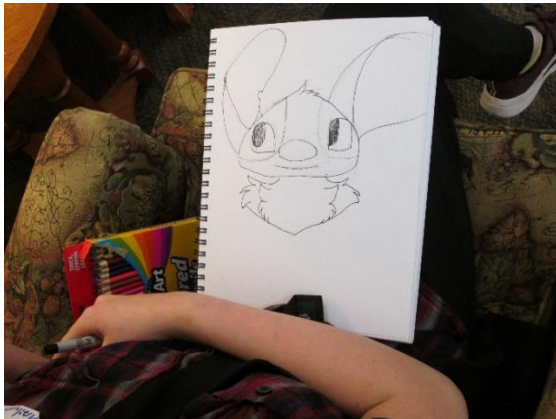
Uno



Card game



Art work



Close-up of artwork



Checkers with staff person, Bobbie



More card playing

More Clue with volunteer, Eric



Artist's rendition of the murderer

Dice game with all participants





An intense game of dice with everyone!



Watching Sherlock Holmes movie



FOR IMMEDIATE RELEASE

Contact: Patricia Spencer, Public Information Officer  
406.447.6684 [pspencer@lclibrary.org](mailto:pspencer@lclibrary.org)

### East Helena Library Receives Sherlock Holmes Grant

June 7, 2018 (Helena, MT)—Lewis & Clark Library Director John Finn is pleased to announce that the East Helena Branch of the Lewis & Clark Library has received a 2018 Jan Stauber Grant from the Beacon Society. Finn explains that the intent of the grant is to “introduce young people to Sir Arthur Conan Doyle’s stories about his famous fictional detective, Sherlock Holmes.” East Helena Branch Library Assistant Andrea Eckerson applied for and received the grant and plans to use the funds for a Sherlock Holmes inspired mystery lock-in for the middle school patrons, which will take place in December.

The Beacon Society awards the grants in honor of a wonderful Sherlockian, Jan Stauber. Stauber, a New Jersey middle-school teacher, who visited classes for a decade in the guise of Sherlock Holmes to encourage students to discover the joys of reading. Stauber, who died in 2005, was the first winner of the society’s Beacon Award, given annually to one teacher whose exemplary educational experiences fulfill the mission of the society.

The Stauber Grants have been given to creative educators and librarians in the USA since 2004 and Canada since 2012. In 2017, over twenty projects were funded. Previous awardees have used Sherlock Holmes to teach English, literature, history, mathematics, deductive reasoning, forensics, and critical thinking to students from elementary through high school.

The grant intends to promote similar creative work by giving financial help to public and private school teachers, organizations, libraries, children’s museums, counselors and others who develop literary curriculum projects and other educational experiences encouraging young people to read, primarily by introducing them to the stories about Sherlock Holmes.

East Helena Branch Librarian, Diane Potter, is excited about receiving the grant, “Those attending the middle school lock-in will have a lot of fun dressing up, solving mysteries, and playing games and puzzles. It is a very creative grant and I just know that Andrea will execute it in a fine fashion.”

The Beacon Society is a not-for-profit affiliate of the Baker Street Irregulars, the New York City-based group of Sherlock Holmes enthusiasts founded in 1934.

**From:** Patricia Spencer  
**To:** Great Tribune; Helena TBID; HelenaEvents; IRarts@helenair.com; Jesse.Chaney@helenair.com; John Riley; Paul F; Press Release General; all; eliza.powell@wakeupmt.com;irstaff@helenair.com; thomas.plank@helenair.com  
**Date:** 12/12/2018 4:36 PM  
**Subject:** Lewis & Clark Library East Helena Branch Receives Sherlock Holmes Grant  
**Attachments:** Patricia Spencer.vcf; easthelenareceivesgrant.docx

#### East Helena Library Receives Sherlock Holmes Grant

December 12, 2018 (Helena, MT)—Lewis & Clark Library Director John Finn is pleased to announce that the East Helena Branch of the Lewis & Clark Library has received a 2018 Jan Stauber Grant from the Beacon Society. Finn explains that the intent of the grant is to “introduce young people to Sir Arthur Conan Doyle’s stories about his famous fictional detective, Sherlock Holmes.” East Helena Branch Library Assistant Andrea Eckerson applied for and received the grant and plans to use the funds for a Sherlock Holmes inspired mystery lock-in for the middle school patrons, which will take place December 27<sup>th</sup>.

The Beacon Society awards the grants in honor of a wonderful Sherlockian, Jan Stauber. Stauber, a New Jersey middle-school teacher, who visited classes for a decade in the guise of Sherlock Holmes to encourage students to discover the joys of reading. Stauber, who died in 2005, was the first winner of the society’s Beacon Award, given annually to one teacher whose exemplary educational experiences fulfill the mission of the society.

The Stauber Grants have been given to creative educators and librarians in the USA since 2004 and Canada since 2012. In 2017, over twenty projects were funded. Previous awardees have used Sherlock Holmes to teach English, literature, history, mathematics, deductive reasoning, forensics, and critical thinking to students from elementary through high school.

The grant intends to promote similar creative work by giving financial help to public and private school teachers, organizations, libraries, children’s museums, counselors and others who develop literary curriculum projects and other educational experiences encouraging young people to read, primarily by introducing them to the stories about Sherlock Holmes.

East Helena Branch Librarian, Diane Potter, is excited about receiving the grant, “Those attending the middle school lock-in will have a lot of fun dressing up, solving mysteries, and playing games and puzzles. It is a very creative grant and I just know that Andrea will execute it in a fine fashion.” Sign-up forms are available at the Lewis & Clark Library East Helena Branch and must be returned by December 18<sup>th</sup>. For more information on the lock-in, contact the East Helena Branch at 406-227-5750.

The Beacon Society is a not-for-profit affiliate of the Baker Street Irregulars, the New York City-based group of Sherlock Holmes enthusiasts founded in 1934.

-30-

*Patricia C. Spencer  
Public Information Officer & Volunteer Coordinator  
Lewis and Clark Library  
120 S. Last Chance Gulch  
Helena, MT 59601  
406-447-1690 ext 124*

# Secrets, subterfuge and Sherlock

Holmes-themed lock-in hosted by E. Helena library

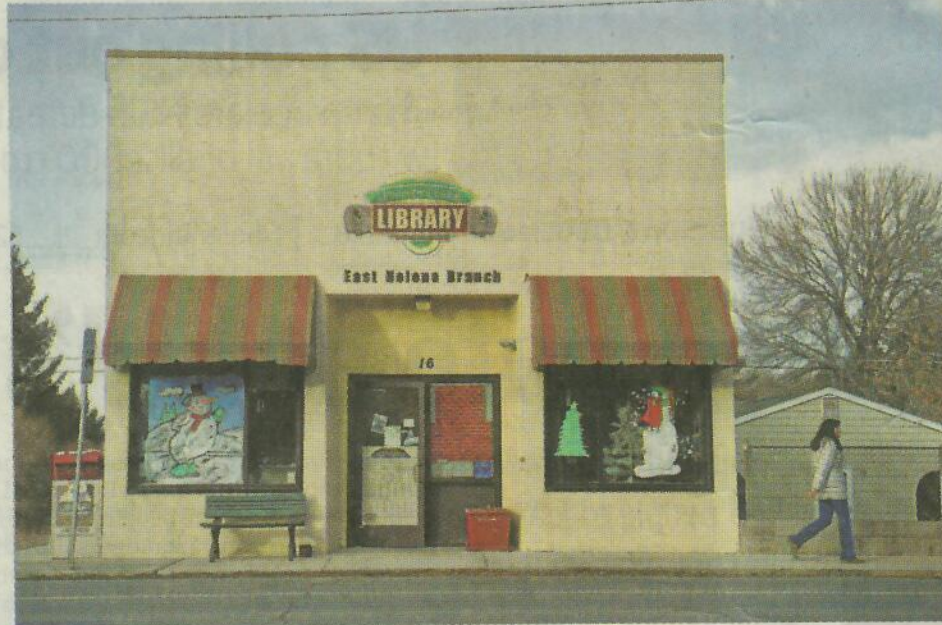
**TYLER MANNING**  
tyler.manning@helenair.com

Deerstalker hats, trench coats, magnifying glasses and pipes will be the attire at the East Helena branch of the Lewis and Clark Library on Thursday, Dec. 27, as middle school students arrive ready to sleuth during a Sherlock Holmes-themed lock-in.

Participants will be searching for clues and using the powers of deduction to solve a murder. The script and narrative will be adapted from a kit the library owns and themed around Arthur Conan Doyle's famous detective. The evening begins at 7 p.m. and will include pizza and snacks. Until 7 a.m. participants can watch both of the recent Guy Ritchie Sherlock Holmes films starring Robert Downey Jr. and play mystery-themed board games like Clue.

"There will be lots of silly games and things we do to keep kids awake and engaged," said Andrea Eckerson, assistant librarian and teen services branch librarian.

The event is the result of Eckerson's love of Sherlock Holmes and creativity. She received a 2018 Jan Stau-



THOM BRIDGE, THOM.BRIDGE@HELENAIR.COM

A library patron walks out of the East Helena Branch of the Lewis and Clark Library on Wednesday, Dec. 19.

ber Grant from the Beacon Society. Initially, Eckerson applied for the grant as part of an assignment while pursuing her library sciences degree, but decided later the grant would fit her lock-in murder mystery for teens idea.

"I've love Sherlock Holmes, mystery and problem solving," Eckerson said. "And this fit all of those categories."

The lock-in's purpose is to introduce teens to the works of Doyle and his famous detective, Sherlock Holmes.

"Those attending the

middle school lock-in will have a lot of fun dressing up, solving mysteries and playing games and puzzles," said Diane Potter, branch librarian. "It is a very creative grant and I just know that Andrea will execute it in a fine fashion."

"It also teaches the social aspects of reading and discussing literature," Potter said.

In the past, the Stauber grant has used Sherlock Holmes to teach English, literature, history, mathematics, deductive reasoning, forensics and critical thinking.

This is the second lock-in that the East Helena branch has held. The previous event was a middle school lock-in just for fun with seven youths.

"I think lock-ins create long-term friendships," Eckerson said. She explained that many of the friends she met at lock-ins were very close to her for years.

The mystery lock-in will have a capacity of 12 youths and the library has around half of that number already registered.

Please see **LOCK-IN**, Page A5

## CORRECTIONS

A Long Streets Project story and graphics package on Montana's economic geography published Nov. 28 used incomplete wage data from the U.S. Bureau of Economic Analysis that resulted in an underreporting of the average statewide wage. The correct statewide average is about \$43,600.

## WEATHER TRIVIA

Helena's most stubborn winter warm spell began on Dec. 20, 2005. For 51 days starting on this date, including all of what was to be our warmest January, our average daily high was 45 degrees.

## HELENA'S FIVE-DAY FORECAST



## NATIONAL OUTLOOK

As dry weather lingers in New England, incoming, gusty winds and severe thunderstorms of snow will fall over the Upper Midwest. Expect a dry day. More heavy rain, mountain snow in the Northwest.

## Independent Record

Phone (406) 447-4000  
Toll free 1-800-447-4000  
Fax (406) 447-4000

### NEWS

Work hours  
Evenings, Weekends  
Fax  
News Tips editor@helenair.com  
Sports

**Publisher Anita Fasbender**  
**Editor Jesse Chaney**  
**Circulation Manager Steve B...**  
**Advertising Director Erica Y...**  
**Controller Lynn Lloyd**

Our business hours are 8 a.m. Monday through Friday at 2222 Washington St., Helena, MT 59701 (USPS 261 300)

A Division of Lee Enterprises  
The Independent Record is published daily.

**Copyright 2018 Independent Record**  
Reproduction, reuse or transmission, including photocopying, recording, or any information storage and retrieval system, is prohibited without permission in writing from the publisher.

**Subscription Offers**  
All subscription offers available on our website, including our e-mail promotions, on-site promotions, are valid for new subscribers past thirty (30) days to register.

**Auto-Renewal, Cancellation, and EZ Pay** is a convenient electronic payment method. Only Full Access news subscriptions are eligible for EZ Pay or debit banking (ACH) payment. The term you select on your payment method ("Annual" or "Monthly") will automatically renew more than twenty-one (21) days before the end of your term.

**IF YOU DO NOT AFFIRMATIVELY CANCEL YOUR SUBSCRIPTION, YOU WILL BE AUTOMATICALLY RENEWED. YOU WILL BE INITIALLY SELECTED AT THE TIME OF YOUR SUBSCRIPTION PURCHASE.**

If you have provided us with a valid e-mail address, you will be saved in your account and you will be notified of your subscription renewal date. Your subscription will be automatically renewed on the payment date and the payment method you selected at the time of your initial subscription purchase will be used.

We reserve the right to change your subscription rate or service at any time. We will provide a refund for any amounts you have prepaid.

**Full Access Subscriptions**  
Full Access subscribers get the most out of their subscription. Therefore, if you register for a Full Access subscription, you agree to the terms and conditions set forth in the Full Access Subscriber Agreement.

**IN ADDITION TO YOUR FULL ACCESS SUBSCRIPTION, THERE WILL BE AN ADDITIONAL CHARGE OF \$6.99 PER MONTH.**

**PREMIUM PUBLICATIONS, INCLUDING THE MONTANA NEWS-PAPER, ARE AVAILABLE FOR ADDITIONAL CHARGE. THERE WILL BE AN ADDITIONAL CHARGE OF \$5.00 EACH. THESE CHARGES WILL BE REBILLED TO YOU AT THE END OF EACH MONTH WHEN YOUR SUBSCRIPTION IS RENEWED.**

Full Access Subscription rates are available on our website. All Full Access Subscriptions require you to first provide your e-mail address and create an account online. To activate your subscription, please call 406-447-4000. For assistance setting up your account, please call 406-447-4000.

actions.  
k, the prose-  
course. Con-  
medical ev-  
conclusively  
is had died by  
e truck, pos-  
a hung jury  
a the homi-  
schenbacher  
the endan-  
s shift an-  
o wanted to  
n for Harris'  
veral com-

menters in the "Mission Valley Safety Awareness" Facebook group attacking Eschenbacher and the local criminal justice system. "We want justice," Castlio said outside the courthouse before Wednesday's hearing. "Criminal endangerment is not justice."

But at the hearing, Lake County District Court Judge James Manley accepted the amended charge, and dismissed the three counts of witness

amended charge. Criminal endangerment carries a maximum penalty of 10 years in prison, a \$50,000 fine, or both. That's not enough in the eyes of Harris' sister, Michelle Sharbono.

"I'm disappointed in how our judicial system is handling my sister's homicide case," she said after the hearing, "and I don't think that the sentence and charges are worth a human life."

Parizeau's sentencing hearing is scheduled for 2:30 p.m. on Jan. 30.

## Lock-in

From A2

Interested parties should visit the East Helena branch of the Lewis and Clark Library to fill out an application. Parents will be responsible for dropping off their child at 7 p.m. on Dec. 27, and picking them up at 7 a.m. on Dec. 28. The event is open to grades sixth through eighth.

Eckerson requests that interested parties have their applications submitted

as soon as possible.

The Stauber Grant is awarded in honor of famous Sherlockian Jan Stauber. Stauber was a middle-school teacher who visited classes for decades in the guise of Sherlock Holmes to share the joys of reading with students.

The mystery lock-in is an offshoot of the East Helena branch's teen library program, which hosts a program from 3:45 to 5 p.m. every Thursday featuring movies, crafts, board games and reading.

om a vehicle

t of a phone.

g 14-year-old  
ress by LCSO

e that was in  
into the mat-  
ation for MIP  
s referred to

assault that  
re is suspect

block of Lo-  
tigation into  
er arrest for  
was booked

at occurred  
mation and

wallet from

a business  
nformation

m a vehicle


ck of Logan  
o the matter  
outstanding  
e LCSO Jail.  
at occurred  
mation and

a business  
nformation

vehicle for  
rk Avenue.  
male being  
e. She was

tivity from

lock of Eu-  
ng and the  
estigation  
under ar-  
LCSO Jail.



Retz  
Funeral Home & Crematory

*Celebrating a Life Lived*

**Chris Holt  
LaRae Backeberg**

315 E. Sixth Avenue, Helena, Montana  
406.442.1550  
[www.retzfuneralhome.com](http://www.retzfuneralhome.com)

### "In Our Care"

#### FRIDAY

**RIES**, Theresa M., age 54, of Helena, passed away Dec. 16, 2018. A viewing will be at 9:30 a.m. Friday, Dec. 21, 2018, followed by a Rosary at 10 a.m. and then the Mass of the Angels at 10:30 a.m. all at the Holy Cross Church, 449 Hoback in Helena. Burial will take place at the Montana State Veterans Cemetery, Fort Harrison, following the Mass. A reception will follow the burial at Theresa's childhood home at 6852 Green Meadow Drive, in Helena. In lieu of flowers, please send donations to the Holy Cross Church, P.O. Box 382, Helena, MT 59624 or to a charity of the donor's choice. Please visit [www.retzfuneralhome.com](http://www.retzfuneralhome.com) to offer a condolence to the family or to share a memory of Theresa.

F  
P  
t  
n  
C  
l  
b  
a  
I  
g  
w  
c  
a  
m  
i  
a  
t  
H  
M  
M  
T  
to  
of P

FU

M  
pass  
ral c  
plan  
hono

Big  
& Twitch  
Creel

Lock-in Expenditures with Jan Stauber Grant monies

Sherlock Holmes Collection (Sherlock Holmes/Sherlock Holmes: A Game of Shadows) Blu-ray	\$7.88
Hasbro Clue Game	\$8.77
Murder at Merkister Hall-Murder Mystery Game for 12 players	\$59.99
12 Extraordinary Cases of Sherlock Holmes (Puffin Classics) by Sir Arthur Conan Doyle	\$71.88
Sherlock Holmes Fictional Character Cardboard Cutout + Shipping and Handling	\$54.90
12 Satin pillow cases	\$12.00
Napkins, plates, cups	\$8.00
12 Mason jars and glass markers	\$26.58
TOTAL:	
\$250.00	

Lock-in Expenditures with Friends of the Library Funds

Costumes:	necktie tshirt	\$12.99
	Indiana Jones hat and whip	\$10.89
	Stethoscope	\$6.35
	Car lover's tshirt	\$19.99
	Ladies necktie	\$8.99
	Cat eye glasses	\$9.99
	Scrub hat	\$6.98
	Steampunk skirt	\$19.99
	Scarf	\$1.00
Decorations:		\$4.00
Food:	Snacks and Drinks	\$77.82
	Pizza	\$32.44
TOTAL:		
\$211.43		

mIDDLE ScHOOl Lock-in at the  
EaST hELENa LiBRary!!

December 27-28 (7pm-7am)

Pick up your applications at the Library...16 E. Main Street in  
East Helena.

Completed Applications are **DUE** at the Library no later than  
Tuesday, DECEMBER 18th.

Lock-in is a Sherlock Holmes Murder Mystery, so there will be  
costumes, games, prizes, movies (PG-13), and much much more!

Support for this program is provided by the Jan Stauber Grant  
Program of the Beacon Society.

Please call Andrea with questions at 227-5750

mIDDLE ScHOOl Lock-in at the  
EaST hELENa LiBRary!!

December 27-28 (7pm-7am)

Pick up your applications at the Library...16 E. Main Street in  
East Helena.

Completed Applications are **DUE** at the Library no later than  
Tuesday, DECEMBER 18th.

Lock-in is a Sherlock Holmes Murder Mystery, so there will be  
costumes, games, prizes, movies (PG-13), and much much more!

Support for this program is provided by the Jan Stauber Grant  
Program of the Beacon Society.

Please call Andrea with questions at 227-5750

mIDDLE ScHOOl Lock-in at the  
EaST hELENa LiBRary!!

December 27-28 (7pm-7am)

Pick up your applications at the Library...16 E. Main Street in  
East Helena.

Completed Applications are **DUE** at the Library no later than  
Tuesday, DECEMBER 18th.

Lock-in is a Sherlock Holmes Murder Mystery, so there will be  
costumes, games, prizes, movies (PG-13), and much much more!

Support for this program is provided by the Jan Stauber Grant  
Program of the Beacon Society.

Please call Andrea with questions at 227-5750

mIDDLE ScHOOl Lock-in at the  
EaST hELENa LiBRary!!

December 27-28 (7pm-7am)

Pick up your applications at the Library...16 E. Main Street in  
East Helena.

Completed Applications are **DUE** at the Library no later than  
Tuesday, DECEMBER 18th.

Lock-in is a Sherlock Holmes Murder Mystery, so there will be  
costumes, games, prizes, movies (PG-13), and much much more!

Support for this program is provided by the Jan Stauber Grant  
Program of the Beacon Society.

Please call Andrea with questions at 227-5750

For your information, a rough outline of activities is listed below.

7-8:00pm: intro, expectations, crafts, photos, costume hand-outs/donning costumes

8:00-10:00pm: Murder Mystery--Murder at Merkister Hall

10:00-11:30pm: read aloud of Sherlock Holmes stories, puzzle solving games, book hand-out.

11:30pm-12:30am: Ice breaker games/relays with dessert prizes with Pizza at 11:30pm.

12:30-1:30am: flashlight tag, hide-and-seek

1:30-2:30am: board games like Clue and Scotland Yard.

2:30-4am: screening of Sherlock Holmes movie.

4-6:30am: Second Sherlock Holmes movie screening.

4-6:00am: Activities if the teens are needing to move around. Otherwise, the second movie will be on and they may be sleeping.

6:00am: Time to wake-up, get some breakfast, gather belongings and clean-up.

*Crafts:* Decorating water jars with pens—out on tables. Can choose another straw to go with one in jar.

Decorating of pillow cases. Bag on chair by the tables in back. **Diane**

*Photos:* to be taken at beginning with cardboard Sherlock Holmes and with costumes on prior to Murder Mystery. **Andrea**

*Costumes:* on the coat rack, bagged with participant's name on it and costume pieces.

*Read aloud:* **Diane and Andrea**

*Puzzle solving games:* **Eric and Bobbie** On the southeast side of teen stacks.

*Book hand-out and decorating of book bag:* **Andrea**

*Ice breaker games/relay races:* **Andrea will direct/everyone will help**

Games are carry Styrofoam ball on spoon-relay teams: pop the underinflated balloon—relay teams: count to 100 with dice: blow the Styrofoam ball around the table. In a bag labeled games.

*Tag and hide and seek:* We'll let the participants vote on which by show of hands. **All help.**

*Board games:* Again, we'll let the participants break off and learn and play the games. **All help.**

*Movies:* all set up. Popcorn bags are on top of microwave. Soda and water for drinks. Can have snacks.

*Snacks available:* cheese sticks, carrots with ranch dip, pretzels, apples

*Pick up and Breakfast:* **Ron and Andrea** vacuuming, gathering of participants' belongings, garbage out, tables wiped down, furniture mostly put back in place: *Breakfast*—microwavable sausage, muffins, cinnamon rolls, ginger bread, other bread, OJ, and apple juice.



### Expectations/Firm Rules/Consequences

- #1. We will treat one another with respect and courtesy, as we want to be treated.
- #2. If an adult raises a hand, follow suit, and everyone be quiet and listen to the adult.
- #3. We will respect the library and do our best to keep it as it is when we arrive.
- #4. One warning will be given for behavior that is unacceptable (firm rules). After that, a parent will be called.
- #5. We will be open minded so that we can have a great time, learn a bit about Sherlock Holmes, and forge new friendships and strengthen old ones.

### Firm Rules

Cell phone/Device use is off limits. Please ask to check in with parents and/or to say goodnight.

One at a time in the bathroom.

Leaving the library is not allowed unless emergency or another adult-approved reason. Parent must pick up.

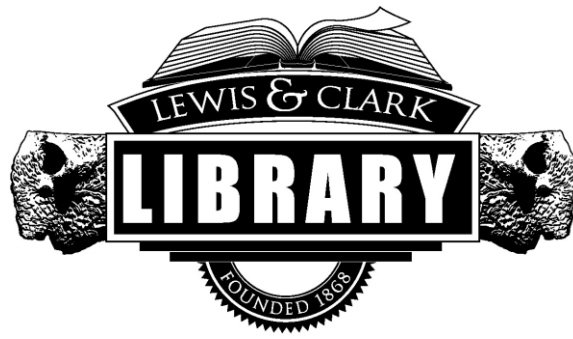
Hands to self. No roughhousing.

Keep rude thoughts and behavior to yourself.

We are indoors, please try to keep voices at indoor level a majority of the time!

The sleeping area is for movies and sleeping once that starts.

If need time to yourself, just say so. We will respect that.



December 21, 2018

Dear Lock-in Participant and Family:

Congratulations! You are registered for the upcoming *Sherlock Holmes Murder Mystery Library Lock-In* on Thursday, December 27th. The *Lock-In* begins at 7:00 pm on Thursday, and ends on Friday morning at 7:00 am. **Please let us know ASAP if you will be unable to attend.** Here is a list of items to bring with you to the *Lock-In*:

- ✓ **A sleeping bag and pillow**
- ✓ **Comfortable clothing or pajamas**
- ✓ **Shoes that tie (we'll run around the library in the dark-ish!)**
- ✓ **A snack to share (such as fruit, cookies, chips, etc.) **Please, no food with peanuts.****
- ✓ **Any medication you may need**
- ✓ **Costume suggestions for your part, which are included in this mailing. If you are unable to bring costume pieces, some will be available to borrow the night of the lock-in.**

**All bags and items will be checked at the door. Teens will be asked to leave their personal electronic devices stowed for the duration of the flight. (We understand that some teens may need to check in with a quick text or call; that's fine and we'll make sure it happens!)**

Late-night pizza, soda, and breakfast will be provided at the *Lock-In*, but you should be sure to **have dinner before arriving**. The *Lock-In* is a great opportunity to spend time with friends as well as get to know new friends. Kindness and consideration will be expected of every *Lock-In* participant and chaperone. It is also important to remember the regular rules of the Library will be in effect during the *Lock-In*. You will not be allowed to leave the Library during the *Lock-In*. **Please arrange for transportation home at 7:00 AM Friday! Let your adult know they'll need to walk into the library to pick you up on Friday morning.**

A fun-filled night is planned that includes group activities, movies, music, and time to play board, computer, and video games. **Feel free to bring board games.**

We are looking forward to seeing you on Thursday, December 27th at 7:00 pm! Please call me at 227-5750 with any questions. Should you need to reach me during the *Lock-In*, you can call my cell phone at 461-3889 or the Library number at 227-5750.

Thank you,  
Andrea Eckerson  
Assistant Librarian/Teen Librarian  
East Helena Branch Library

**Support for this program is provided by the Jan Stauber Grant Program of the Beacon Society.**



December 3, 2018

Dear Parents,

Your child has shown interest in the *Sherlock Holmes Murder Mystery Middle School Library Lock-in*, an upcoming overnight program at the East Helena Branch of the Lewis & Clark Library. The *Lock-In* will begin at 7:00 pm on Thursday, December 27th and continue until 7:00 am on Friday, December 28th. The Middle School Lock-In is an all night event jam packed with group activities, computer games, board games, free time, movies, crafts, and more.

Library staff members and volunteers will be supervising participants at this all-night program. Snacks, beverages, and breakfast will be provided (it is recommended that students eat dinner before arriving on Friday night). **Attendance is limited – to up to 12 pre-registered young adults in grades 6-8.** Your child will not be permitted to leave the *Lock-In* unless it is an emergency, and only if a parent or legal guardian picks up the child. If your child would like to participate, please read the attached registration/permission slip together, sign it, and return it to the East Helena Branch Library, or fax to 227-5751 from December 3<sup>rd</sup> through December 18<sup>th</sup>. Up to 12 participants will be selected in a lottery and notified by Friday, December 21<sup>st</sup>.

Participants must provide their own sleeping materials, such as a blanket, pillow, sleeping bag, etc. If your child is scheduled to take medication during the Lock-In, please be sure that your child brings it to the event. We request that the Library be alerted in writing if your child has any special need so that we can be prepared. (See Permission Slip) **Bags and other items will be checked at the door. Students will be asked to leave personal gaming devices and cell phones with their belongings.**

Participants are not likely to get a complete night's sleep at the *Library Lock-In*, and we request that you arrange transportation for your child to the library at 7:00pm on Friday night and home from the library at 7:00am on Saturday morning. **Please honor the drop-off and pick-up times** as we will be busy preparing Friday night and exhausted Saturday morning! Should you need to contact your child during the Lock-In, the library's telephone number is 227-5750. Be sure to provide us with a number where you may be reached in case we need to contact you.

Much thought and planning has gone into this event so that your child will have an enjoyable and safe time during the *Library Murder Mystery Lock-In*. If you have any questions, or if you would like to volunteer to help, please call me at 227-5750.

Sincerely,

Andrea Eckerson  
Assistant Librarian/Teen Librarian  
East Helena Branch Library

**Support for this program is provided by the Jan Stauber Grant Program  
of the Beacon Society.**



*Middle School Library Lock-in Registration and Parent Permission Slip*  
*Please return to East Helena Branch Library*

**Lock-in date: Thursday, December 27, 2018**  
**Please check your calendars for conflicts before registering!**

**TO BE FILLED OUT LEGIBLY BY THE YOUNG ADULT PARTICIPANT:**

Name: \_\_\_\_\_

Mailing Address: \_\_\_\_\_

City: \_\_\_\_\_ Zip code: \_\_\_\_\_

Telephone Number: \_\_\_\_\_

Age: \_\_\_\_\_ School: \_\_\_\_\_ Grade: \_\_\_\_\_

Email address: \_\_\_\_\_

By signing my name below, I agree to abide by all the rules of the Library and to follow the directions of the chaperones. I understand that if I do not, my parents will be called and I will have to leave the *Library Lock-In*. All bags and items will be checked at the door.

Signature of Participant: \_\_\_\_\_ Date: \_\_\_\_\_

\*\*\*\*\*

**TO BE FILLED OUT BY THE PARENT/GUARDIAN OF THE YOUNG ADULT PARTICIPANT:**

I, \_\_\_\_\_, give permission for my son/daughter, \_\_\_\_\_, to attend the *Library Lock-In*. I understand that this event is supervised and that the rules and regulations of the Library will be enforced by the chaperones. I also understand that my child will be allowed supervised use of computer video games as well as video games with a Teen or lower rating; view movies with a PG-13 or lower rating; and listen to music moderated by Library Staff.

**Support for this program is provided by the Jan Stauber Grant Program  
of the Beacon Society.**



**I hereby release the East Helena Branch Library and Lewis and Clark Library from any liability for any claim or damage which may result during the event itself.**

During the *Library Lock-In*, I may be reached at the following number: \_\_\_\_\_

Should the Library be unable to contact me, an alternate contact is:

Name: \_\_\_\_\_ Phone: \_\_\_\_\_

Please describe any special needs of the participant (medicine, dietary restrictions, etc.) and/or travel arrangements:

**I agree to pick up my child at the Library at 7:00 AM on Friday, December 28th 2018.**

Signature of parent/guardian: \_\_\_\_\_ Date: \_\_\_\_\_

Yes/No—I'm interested in volunteering the night of the Lock-in; please contact me.

Return to East Helena Branch Library, or fax to 227-5751 between December 3 and December 18. Up to twelve participants will be selected in a lottery and notified by December 21.

**Support for this program is provided by the Jan Stauber Grant Program  
of the Beacon Society.**