

Numbers:

1,102 people visited (adults and kids) and participated in some of the activities.

About 400 kids completed the mystery.

Article:

<http://easton.wickedlocal.com/news/20180219/childrens-museum-in-easton-buzzing-during-school-vacation> - ATTACHED - SEE PAGE 2

The Mystery of the Vanishing Violin

The great Sherlock Holmes violin has gone missing! Luckily young Sherlockians, ages from 4-10 and their families came to 221b Baker Street to help solve the case. Since Mr. Holmes was so distraught over the loss of his beloved violin; he was unable to take this case on himself. It was up to our young detectives to assist his friend and faithful assistant, Dr. Watson in searching for clues and examining evidence to solve the crime.

At the scene the crime, Watson recovered a footprint, a fingerprint, a black thread, and an envelope with a coded message inside. Watson took samples of the suspects' fingerprints, footprints, and handwriting. He also gathered possible fabrics that could be the source of the thread that was recovered from the crime scene. When the young detectives correctly matched the evidence to the sample from the crime scene, they revealed a clue that helped them narrow the list of suspects.

They carefully collected clues in their detective journals. Once the detectives obtained all five clues, they were able to look at the suspects in the lineup. The one who fit the description of the clues was the culprit, the mystery was solved and the case was closed! Each of the young detectives received a prize for solving the case.

Some of the evidence required advanced observation to match it to the samples we collected. The young detectives were following in Sherlock's footsteps and were learning skills he uses to solve mysteries!

1. For the **handwriting analysis** our detectives were required to keep a close eye on how each of the letters and numbers were shaped to conclude if they matched the handwriting sample.
2. The **footprints** required both observation and precise measurement to determine which footprint corresponded with the footprint found at the scene of the crime.
3. Other evidence required special equipment to analyze. In order to match the **fingerprint** found at the crime scene to the suspects' fingerprints, detectives needed the assistance of a magnifying glass.
4. The **fiber analysis** required the use of a microscope. In order to see the minute differences in threads, detectives had to examine the slides under a microscope. The scientific precision paid off in the end, and they were able to determine a clue as to what the suspect was wearing.
5. The remaining clue was found by solving the secret code; the **Dancing Men cipher**! The message from the thief was encoded, requiring the use of a cipher to solve. The young detectives searched high and low to find the letter that corresponded with each "dancing man" from the cipher. After a dedicated search, the detectives were able to decode the secret message, and the full alphabet of the cipher was revealed to them.

Once all of the evidence was examined, the detectives were ready to look at the lineup of suspects. Our detectives employed several strategies to determine who the suspect was. Most used a process of elimination, writing down all potential suspects and crossing them off if they did not match the clue. Others went through each suspect individually, seeing if they matched the description before moving on to the next suspect. In the end, the results were the same. The culprit was caught!

In addition to solving a mystery, there were a number of other Sherlock activities throughout the week.

1. Once Sherlock retired, he had become a beekeeper. Mr. Wayne Andrews from the [Bristol Beekeepers](#) (*The Adventure of the Lion's Mane*) shared his knowledge with the curious detectives. He displayed pictures of bees and their hives. He even brought a jar full of honey to show us. The best part was getting to see and touch a real honey comb up close!

2. A visiting violinist, Casey Douglass, demonstrated how to play the violin. She shared the story of how she got her violin, what kind of music she likes to play, and how to hold the bow. She even allowed the detectives to pluck the violin strings to make music themselves! We were all impressed as Casey expertly played several pieces.
3. Detectives could take a break by making a bookmark or a custom detective journal. Dr. Watson would agree that every detective should carry a **journal** with them in order to write down the clues and details of the case or simply to record your adventures as Dr. Watson did. Some detectives chose to tap into their creativity by making artwork. Some of the art was inspired by the case, such as the picture of mismatching footprints, while others were purely for the detectives' enjoyment.
4. In the book nook, the young detectives were also able to enjoy reading some age-appropriate Sherlock Holmes stories; *Sherlock Holmes in the Hound of the Baskervilles* by Jennifer Adams, *The Adventures of Sherlock Holmes (Classic Starts Series)* by Arthur Conan Doyle, Chris Sasaki (Abridged by), Lucy Corvino (Illustrator), Arthur Pober (Afterward), and *Mysteries of Sherlock Holmes (A Stepping Stone Book Classic): Based on the Stories of Sir Arthur Conan Doyle* by Arthur Conan Doyle, Judith Conaway (Adapted by), Lyle Miller (Illustrator).

The Sherlock Holmes Mystery allowed kids to become interested in reading, learning more about Sherlock Holmes, exploring STEM through the use of tools including microscopes and measuring tools and practice critical thinking, observation and deductive reasoning skills. Overall, they learned new skills, have a better understanding of critical thinking, observation, and deductive reasoning skills.

Visitor Comments:

- “Had a fun visit with my five year old son during February school vacation week. Although the museum is on the small side there are an impressive number of exhibits for kids. The staff was very courteous and helpful too. My son really enjoyed solving who stole the violin in order to help Sherlock Holmes. I will definitely return.”
- “Absolutely loved the Sherlock Holmes scavenger hunt!”
- “Love the atmosphere and worth going back for many events!”

- “I loved the Sherlock Holmes activity for my 8 year old and would love to see other activities like that.”

Children's Museum in Easton buzzing during school vacation

By Joe Pelletier

The Enterprise

Posted Feb 19, 2018 at 4:43 PM

Updated Feb 20, 2018 at 3:07 PM

Kids flock to beekeeping exhibit at Easton museum during February vacation week.

EASTON -- It's actually quite rare to get stung by a honey bee, Wayne Andrews assured the young children gathered around him.

And queen bees will lay up to 2,000 eggs per day, he said -- maybe a million (yep, a million) in their lifetime.

And most importantly, he said, the world would be in big, big trouble without bees.

Andrews, a member of the Bristol County Beekeepers Association, had kids buzzing around his interactive bee exhibit Monday at the Children's Museum in Easton, highlighting a busy day during one of the museum's busiest weeks of the

year: February's school vacation week.

There weren't any live bees on hand Sunday -- that would require a second beekeeper, Andrews said. But there was a beehive, beekeeping tools, photographs of bees and flowers, and a few bee toys for the younger demographic.

Andrews, who lives in Dighton, said he wanted kids to realize the importance of bees in our world.

"Without bees, we're not eating like we are now," he said. "You can kiss oranges, almonds, squash, vegetables, and a lot of plants goodbye without pollinating bees."

All three floors of the museum were abuzz Monday,

Laurie Coyle of Norfolk said she and her son, 2-year-old Fritz, were visiting for the first time.

"There's a huge variety here," Coyle said. "And it's for all age groups, babies right up to 12-year-olds."

The museum is holding its annual "Mystery Week," which challenges children to solve a mystery assignment within the museum: Sherlock Holmes "Mystery of the Vanishing Violin."

"Mystery week is always fun," museum executive director Paula Peterson said. "The kids are learning to use deductive reasoning skills, and they don't even know it."

School vacation week is always a big one at the museum, Peterson said -- "and it tends to get busier as the week goes on."

The beekeeping exhibit returns Wednesday, and the museum will host violinist Casey Douglas for a musical performance Thursday at 9:30 a.m. For a full schedule of events, visit childrensmuseumineaston.org.









Our Objective

Our objective of the *Sherlock Holmes Mystery for Young Learners - Mystery of the Vanishing Violin* (February School Vacation Week 2018) program was to motivate children to be interested in reading and learning about Sherlock Holmes. The children were introduced to STEM (science, technology, engineering and math) topics through the use of tools including microscopes and measuring tools, and practiced critical thinking, observation and deductive reasoning skills just like Sherlock Holmes utilized.

Children, ages 4-10, and their families participated in this engaging crime-solving scavenger hunt - helping Sherlock Holmes solve the mystery of his missing violin.

Impact

Museum visitors, both children and their adult caretakers, expressed a genuine interest in reading (or re-reading) the Sherlock Holmes' stories. For most of these visitors, this was their first time being exposed to tools like microscopes and magnifying glasses. The excitement from the children as they used their critical thinking, observation and deductive reasoning skills and solving the mystery was contagious!



winter wonders 2018

The Old Fire Station
9 Sullivan Avenue
North Easton, MA 02356
(508) 230-3789
www.childrensmuseumineaston.org

RETURN SERVICE REQUESTED

Printed on recycled paper. Please recycle this brochure.

Nonprofit
Organization
U.S. Postage
Paid
North Easton, MA
Permit No. 33

Special Events

These activities are FREE with admission

Martin Luther King Day

Monday, January 15

Museum open 9-4; Special activities 10-3

Dr. King dreamed for us to live in a world where we would "not be judged by the color of [our] skin, but by the content of [our] character. Come create a community art piece that represents his dream for a better world.

Sponsored by HarborOne Bank & AAA Northeast



Groundhog Day

Friday, February 2 | 10am-2pm

Is spring to be or not to be?

That's the question—and Punxsutawney Phil will have the answer. Come make some 'shadowy' crafts inspired by Phil and his prediction.

Sponsored by Cushman Insurance

Valentine's Day

Wednesday, February 14

10am-2pm

A Day devoted to the colors red, pink and white. We'll have a variety of crafting supplies in MakerSpace for you to create a card or a garland and show people close to you how special they really are!

Sponsored by The Farmer's Daughter



Chinese New Year

Friday, February 16 | 10am-2pm

Kung Hei Fat Choy means Happy New Year! Make festive crafts and enjoy good fortune (cookie), on this very colorful day celebrating the Year of the Dog. To bring good luck, come dressed in red clothing which is believed to scare away evil spirits

St. Patrick's Day

Friday, March 16 | 10am-2pm;

Museum open 9-7

Search for leprechauns and design a trap as we celebrate the day with a little leprechaun magic! Wear your greens for a special treat . . .



February Vacation Week
sponsored by Big Y Supermarket



SHERLOCK HOLMES



February Vacation Week

February 19-23

Featuring a new mystery in our Whodunnit Series
Free with Museum admission

"My name is Sherlock Holmes. It is my business to know what other people don't know."

And so begins Sir Arthur Conan Doyle's detective series featuring the world's preeminent detective. However, this time around, Sherlock finds the tables have been turned and it is he who needs your help in solving a personal case, in the *Mystery of the Missing Violin*.

Sherlock's partner, Dr. Watson is distraught with worry. Sherlock seems too close to the case to take an objective lead in pursuing possible suspects. He humbly asks for your participation to close the book on this baffling case. Will you lend a hand?

Sponsored by Big Y Supermarket, Westwood-Mansfield Pediatrics, North Easton Machine, The Children's Workshop, The Farmer's Daughter, Bridgewater Savings Bank, and Paramount Rug.

Support for this program is provided by the Jan Stauber Grant Program of the Beacon Society.

Classics Come to Life

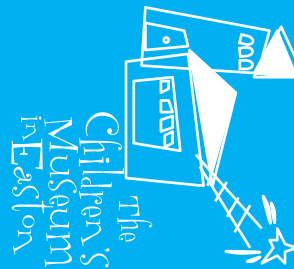
Keeping it Local

Friday, March 23 | 10am-2pm

Celebrate stories! A sampling of our favorite books will come to life through hands-on activities. This year, our focus will be on some talented writers and illustrators who live in the Easton area. Be sure to check childrensmuseumineaston.org for updates on which books will be featured.



winter wonders 2018



Makerspace

These activities are FREE with admission

Spark your imagination!

The new year brings all new themes to build your child's sense of wonder and playfulness as they engage with our trained Wonder Partners in exciting art, science and nature activities. Our Wonder Partners will be available Tuesday through Friday 10-1 and Saturdays and Sundays 1-4. Come make memories with us!



January 2-14—Paper Strip Challenge

Take the challenge! Bend, twist, fold and weave simple strips of paper into magnificent creations!

January 16-28—Tubes

Discover new uses for these hollow wonders!

January 30-February 9—MakerSpace Squared

Look around, squares are everywhere! Let's pay homage to this humble yet vital shape.

February 10-14—Valentines

We'll have lots of red, pink and white crafting supplies to inspire creative expressions of love.

February 15-18—Chinese New Year

Make colorful decorations to celebrate the Year of the Dog.

February 27-March 11—Masks

Inspired by Mardi Gras, come design a festive mask and learn about mask-making around the world.

March 13-18—Go Green

In honor of St. Patrick's Day, we'll go green all week long using natural and green materials in our projects.

March 20- April 1—Spring!

Let thoughts of spring inspire your creations, or make things with springs!

Drop-ins

These activities are FREE with admission

Exploring Music

Wednesdays 10-10:45am

Music builds your toddler's brain! This highly popular program geared for ages 1-4, offers a variety of creative musical activities: singing, rhythm-making, dramatic interpretation, listening and learning about different forms and styles of music and lots of movement! We want to ensure everyone's enjoyment of this program. If your child becomes antsy, you'll kindly be asked to step out from class.

Super Science Explorers!

Thursdays 10-11am

Preschoolers are naturally curious about the world around them. This brand new program series, taught by our STEM educators, includes science concepts in easy to understand ways with simple, hands-on guided projects.

January 11—Snow and Ice and Everything Nice!

Explore science through fun activities including homemade snow and ice art. Get ready for some cold, cool fun!

January 25—Dinosaur Stomp Romp

Junior paleontologists will uncover interesting facts about these creatures that once roamed the earth.

February 15—Chinese New Year Science

Join us as we celebrate the year of the dog through STEM activities.

March 8—A Tribute to Rosie Revere, Engineer

Based on the book by Andrea Beaty, we will design, create, construct and imagine like Rosie, a young girl who dreamed of becoming an engineer!

March 22—Color Craziiness Concoctions

Inspired by the book, *The Mixed Up Chameleon* by Eric Carle, we will learn about the science of color mixing.

Family Autism Event

Saturday, January 28 / 10am-12pm

Friday, March 30 / 4:30-6:30pm

The Museum will be open to families with children aged 10 and under on the Autism Spectrum, and those with Pervasive Developmental Disorder Not Otherwise Specified (PDD-NOS). They and their families have a chance to explore the Museum's hands-on exhibits in a less overwhelming atmosphere. The cost is \$3 per person and you must register to attend. Please visit childrensmuseumineaston.org/family-autism-night for tickets.

Support for programs provided by:



The Children's Museum in Easton

check out childrensmuseumineaston.org for the latest updates

PLEASE NOTE: The Museum closes at 4pm on Fridays during the winter months



january

Sun	Mon	Tue	Wed	Thu	Fri	Sat
	1 Closed	2 MakerSpace theme: Paper Strip Challenge	3 Music 10-10:45	4	5 Open 9-4	6 Open 12-5
7 Open 12-5	8 Closed	9	10 Music 10-10:45	11 Super Science 10-11	12 Open 9-4	13 Open 12-5
14 Open 12-5	15 Open 9-4 MLK Day 10-2	16 MakerSpace theme: Tubes	17 Music 10-10:45	18	19 Open 9-4	20 Open 12-5
21 Open 12-5	22 Closed	23	24 Music 10-10:45	25 Super Science 10-11	26 Open 9-4	27 Open 12-5
28 Open 12-5 Autism 10-12	29 Closed	30 MakerSpace theme: MakerSpace Squared	31 Music 10-10:45			

february

Sun	Mon	Tue	Wed	Thu	Fri	Sat
				1	2 Open 9-4 Groundhog Day 10-2	3 Open 12-5
4 Open 12-5	5 Closed	6	7 Music 10-10:45	8	9 Open 9-4	10 MakerSpace theme: Valentines
11 Open 12-5	12 Closed	13	14 Valentine's Day 10-2 Music 10-10:45	15 Super Science MakerSpace theme: Chinese New Year	16 Open 9-4 Chinese New Year 10-2	17 Open 12-5
18 Open 12-5	19 Museum open 9-4 during February Vacation Week. Come solve the WhoDunnit mystery featuring Sherlock Holmes!	20	21	22	23	24 Open 12-5
25 Open 12-5	26 Closed	27 MakerSpace theme: Masks	28 Music 10-10:45			

march

Sun	Mon	Tue	Wed	Thu	Fri	Sat
				1	2 Open 9-4	3 Open 12-5
4 Open 12-5	5 Closed	6	7 Music 10-10:45	8 Super Science 10-11	9 Open 9-4	10 Open 12-5
11 Open 12-5	12 Closed	13 MakerSpace theme: Go Green	14 Music 10-10:45	15	16 Open 9-7 St. Pat's Day 10-2	17 Open 12-5
18 Open 12-5	19 Closed	20 MakerSpace theme: Spring!	21 Music 10-10:45	22 Super Science 10-11	23 Open 9-7 Classics Come to Life 10-2	24 Open 12-5
25 Open 12-5	26 Closed	27	28 Music 10-10:45	29	30 Open 9-7 Autism 4:30-6:30	31 Open 12-5

- Your family's safety is important to us. We follow the storm closing schedule of Easton Public schools, but in the event of extended days of closings, please check our website. We will reopen as soon as possible.
- 'Tis the season for sniffles and sneezes. If a family member exhibits cold symptoms, visit us at another time when everyone is healthy!